

Mandala

Free-motion Challenge Quilting Along



Week 3 Expanded Quilting Diagrams & Tip Sheet
For more information about the challenge, visit FMQchallenge.com



Week 3

As we move on through the Mandala Free-Motion Challenge Quilting Along, I hope that you are proud of all the quilting we have accomplished so far! This week, we are learning how to deal with irregularly shaped areas, moving from section to section, as well as how to combine designs for different effects!

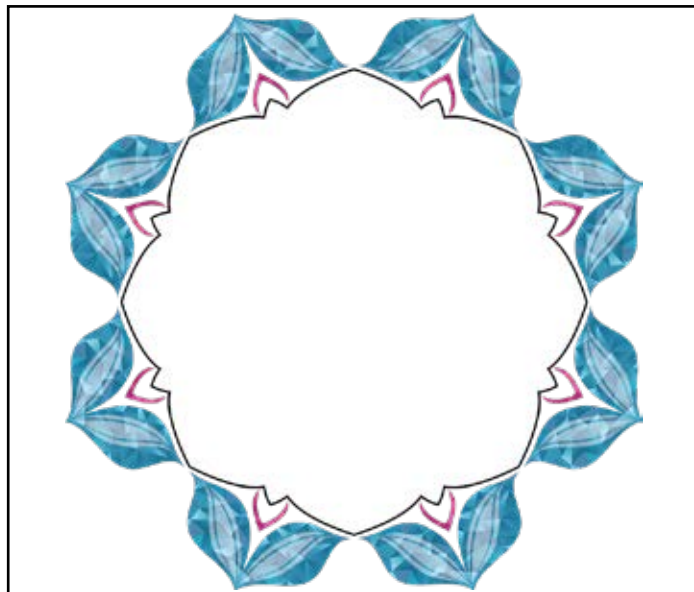
Scan the QR code to rewatch the Week 3 video tutorial.



Your Challenge

If you're quilting along with me on the custom Mandala panel, quilt the blue areas and the white areas inside the blue with the designs of your choice. You can try some of the ones shown in the video, or come up with your own variations.

If you purchased the coordinating thread collection, use the robin egg and white thread for this section.





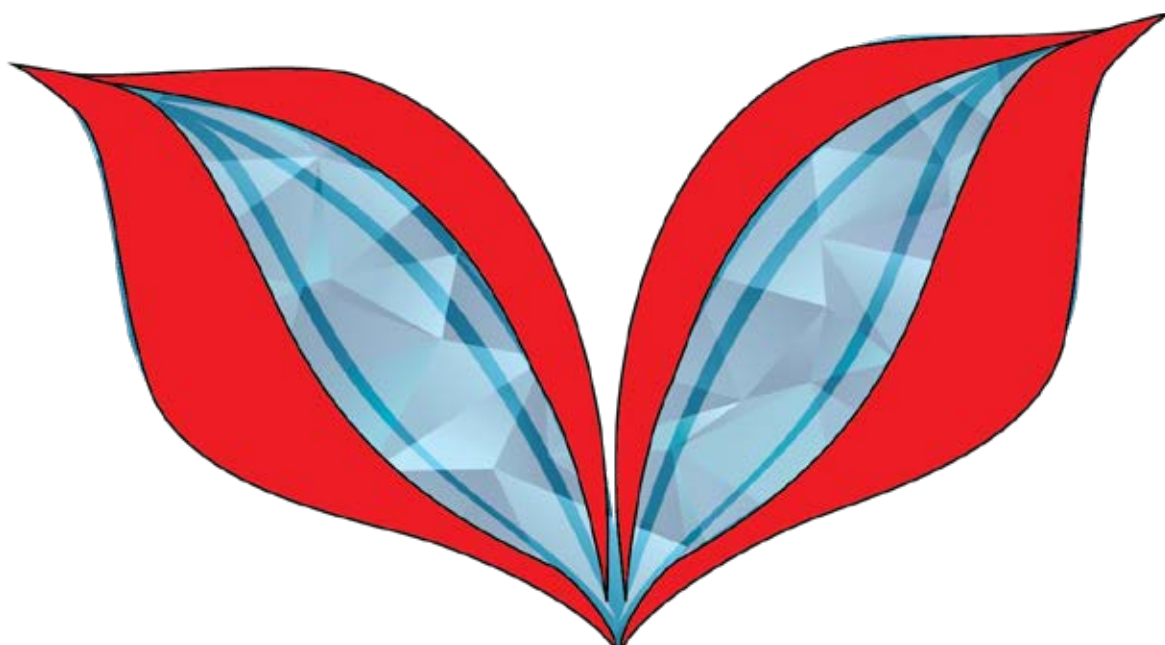
Quilting the Blue Shapes

The individual pieces that make up the blue “ring” of the Mandala are not a shape that we are used to seeing. Pointy at the ends and wider in the middle, these areas are perfect for helping us learn how to deal with these kinds of situations.

Option #1 - Feathers & Wishbones

This option involves quilting feathers, traveling and some wishbones. While not the easiest quilting design option, it’s my favorite! I love using the lines in the fabric as a guide and filling in the spaces with different designs.

For this option, we are going to quilt the feathers in the areas highlighted in red, then we’ll fill in the space between them with a different filler.

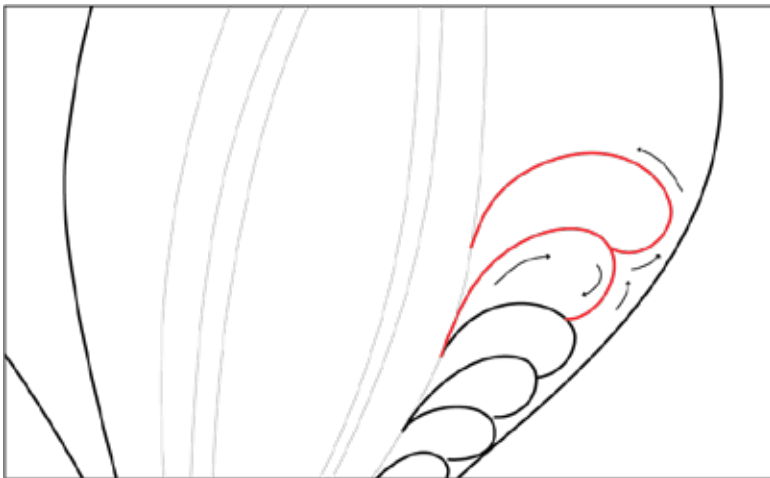




1. Starting from the bottom point, quilt a line that angles up and curves into the edge as shown. Begin quilting petals in the blue space. Since the shape that we are filling in is so pointy at the ends, the first and last “petals” of our feather are going to be much smaller than the rest. Don’t worry if they look weird, they are supposed to be like that!

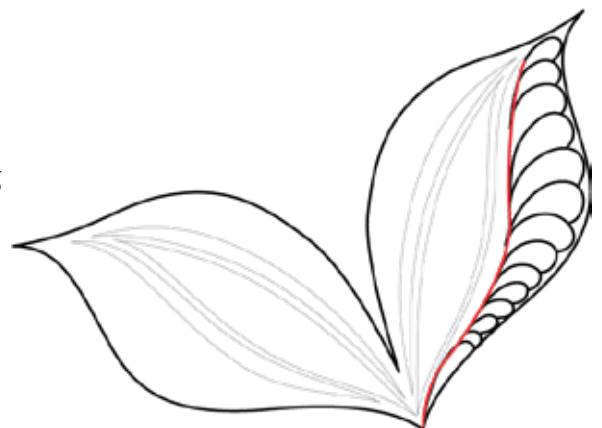


2. Once there is a little more room, quilt the petals up to the point of the area.



Note: The petals on this feather are quilted in groups of two. Quilt a line that curves out towards the edge, curving down to touch the previous one. Travel back around the petal, then quilt the second one so that it curves out and back into the opposite edge of the area.

3. Travel along the line in the fabric back to the starting point.





4. Repeat on the other side of the area, quilting feathers that work up to the point. Then travel along the line back to the bottom.



5. Quilt along the marking in the center of the block, returning to the starting point. Fill in the space between the previously quilted lines with the design of your choice, working your way to the top. In this example, I quilted wishbones but any filler design will work.

Note: For an easier option, just quilt a line from the bottom out to the point.

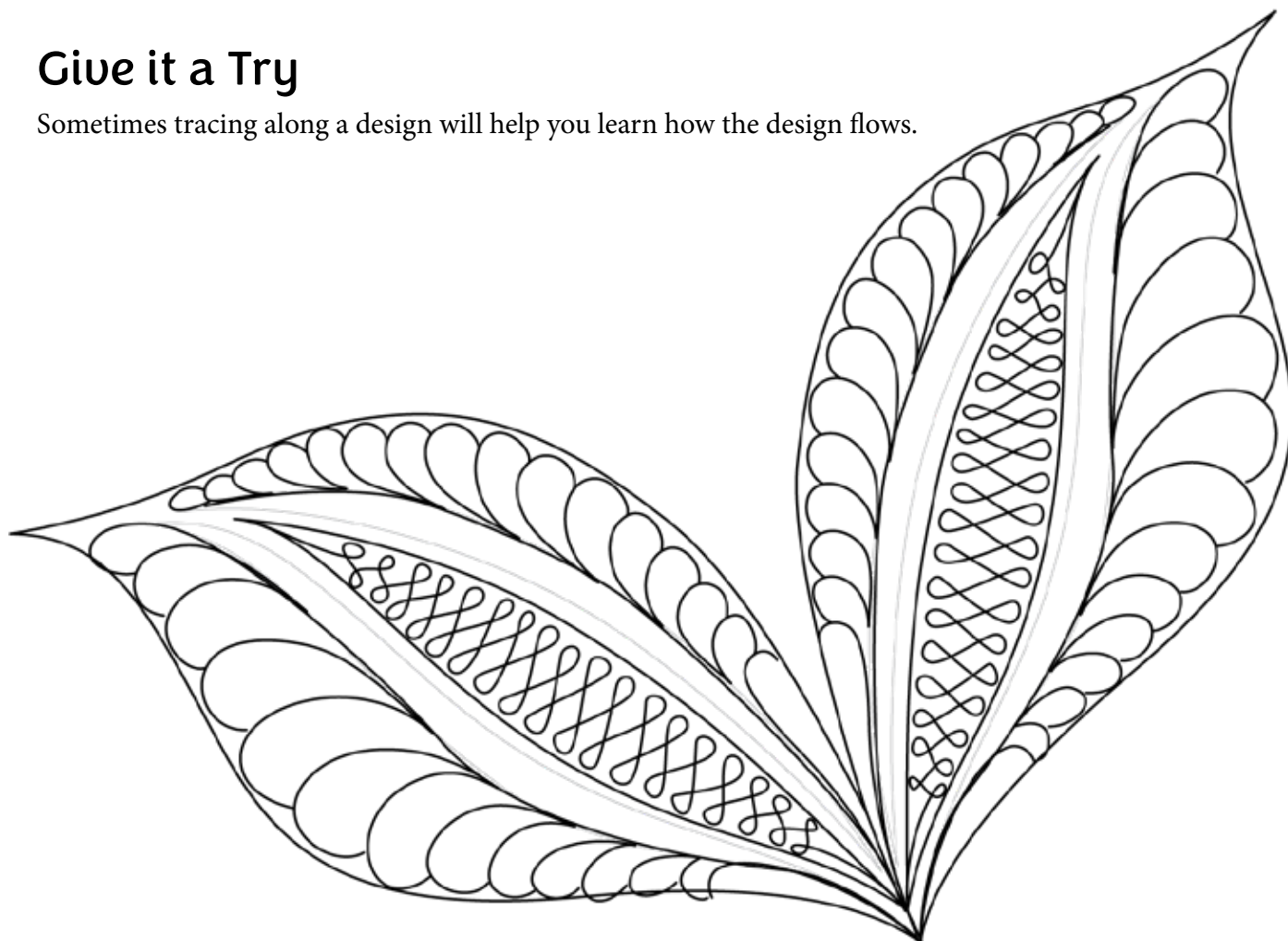




6. Quilt out the edge of the area, then travel to the original starting point . Instead of traveling, you could tie off and start a new line of quilting at the next point. Repeat the steps above on the other side, quilting feathers, traveling and filling in the center.

Give it a Try

Sometimes tracing along a design will help you learn how the design flows.





Audition Designs

Use the diagrams below to audition different designs for the blue areas in the panel.

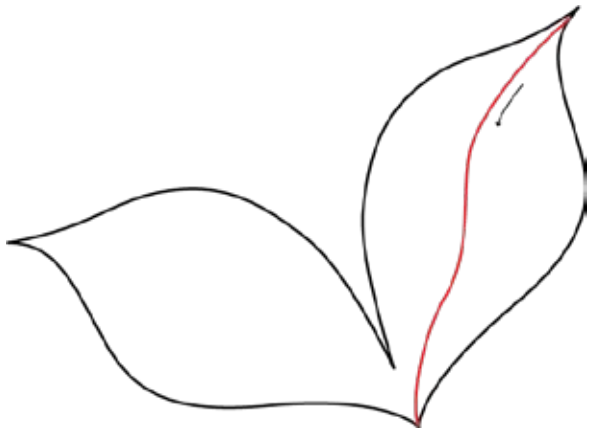


Option #2 - Feathers Only

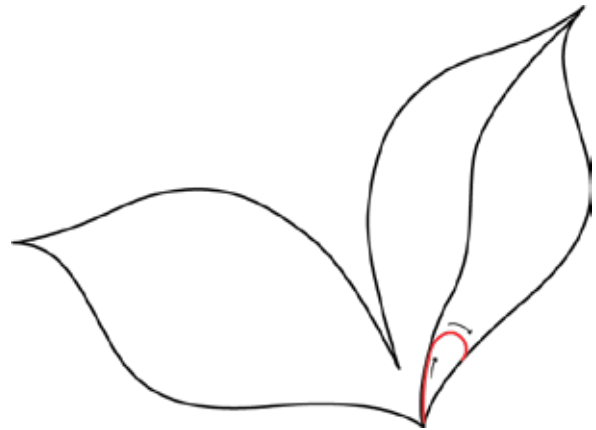
For a slightly easier quilting option, try leaving out the traveling and wishbones and quilting only the curvy beautiful feather. This gives you the elegant look of the feather quicker than the previous option.



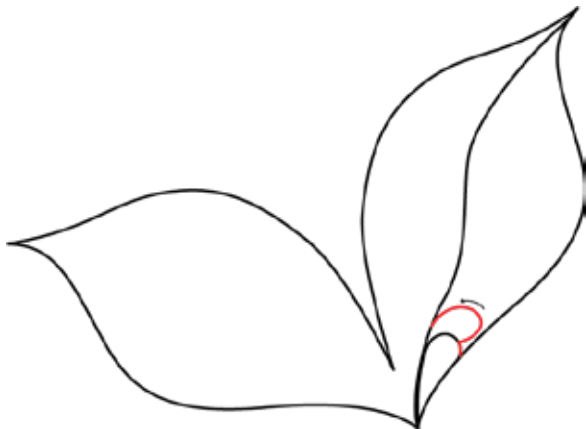
1. Starting from outer point, quilt a slightly wavy line to the bottom point. This will act as the spine for our feather.



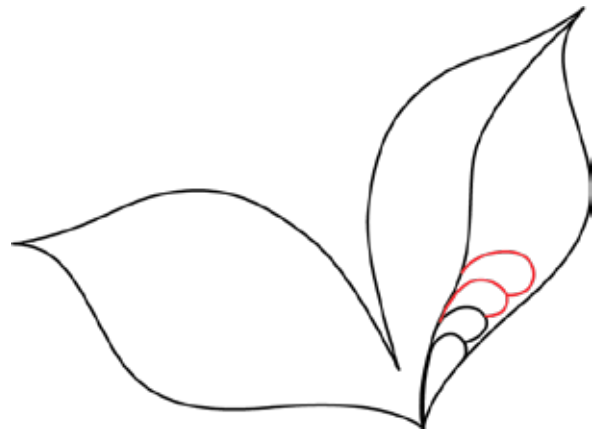
2. From the bottom point, quilt the first petal of the feather by quilting a line that curves out to the outer edge of the area.



3. Travel back along the curve of the petal, then quilt another line that curves out and back towards the spine.



4. Continue quilting the petals in groups of two. One petal goes out the edge and one petal come back into the spine.

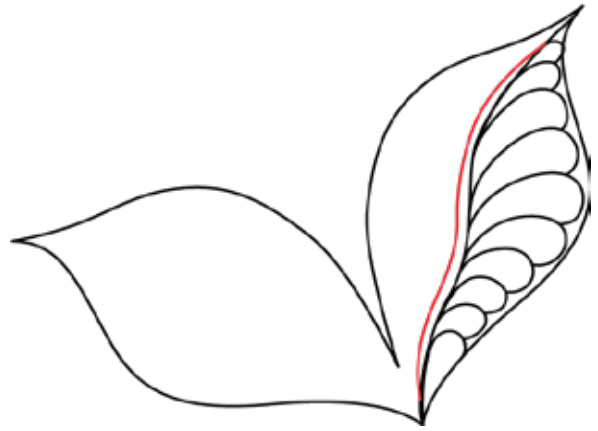




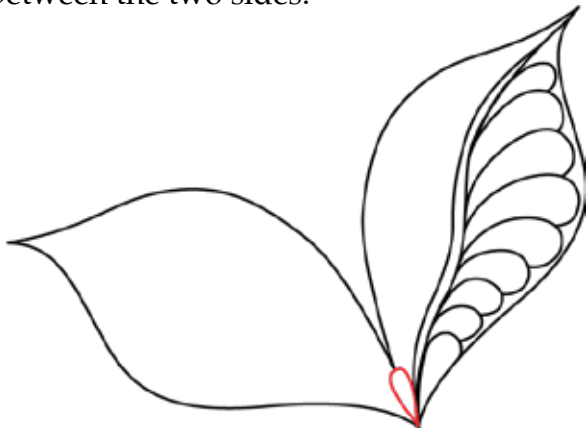
5. Continue quilting the petals up to the point of the area.



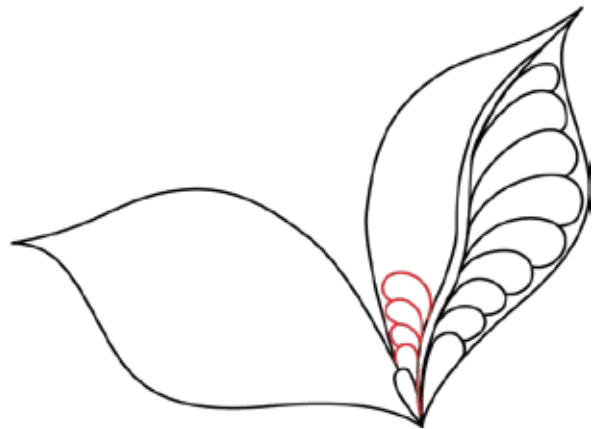
6. Echo the spine back to the bottom point.



7. Before quilting the other side of the feather, quilt a teardrop shape that fills in space between the two sides.



8. Begin quilting petals along the other side of the feather back to the top.



9. Continue quilting petals until you reach the top of the area.



10. To quilt the other side of the area, travel along the outer edge to the opposite point.





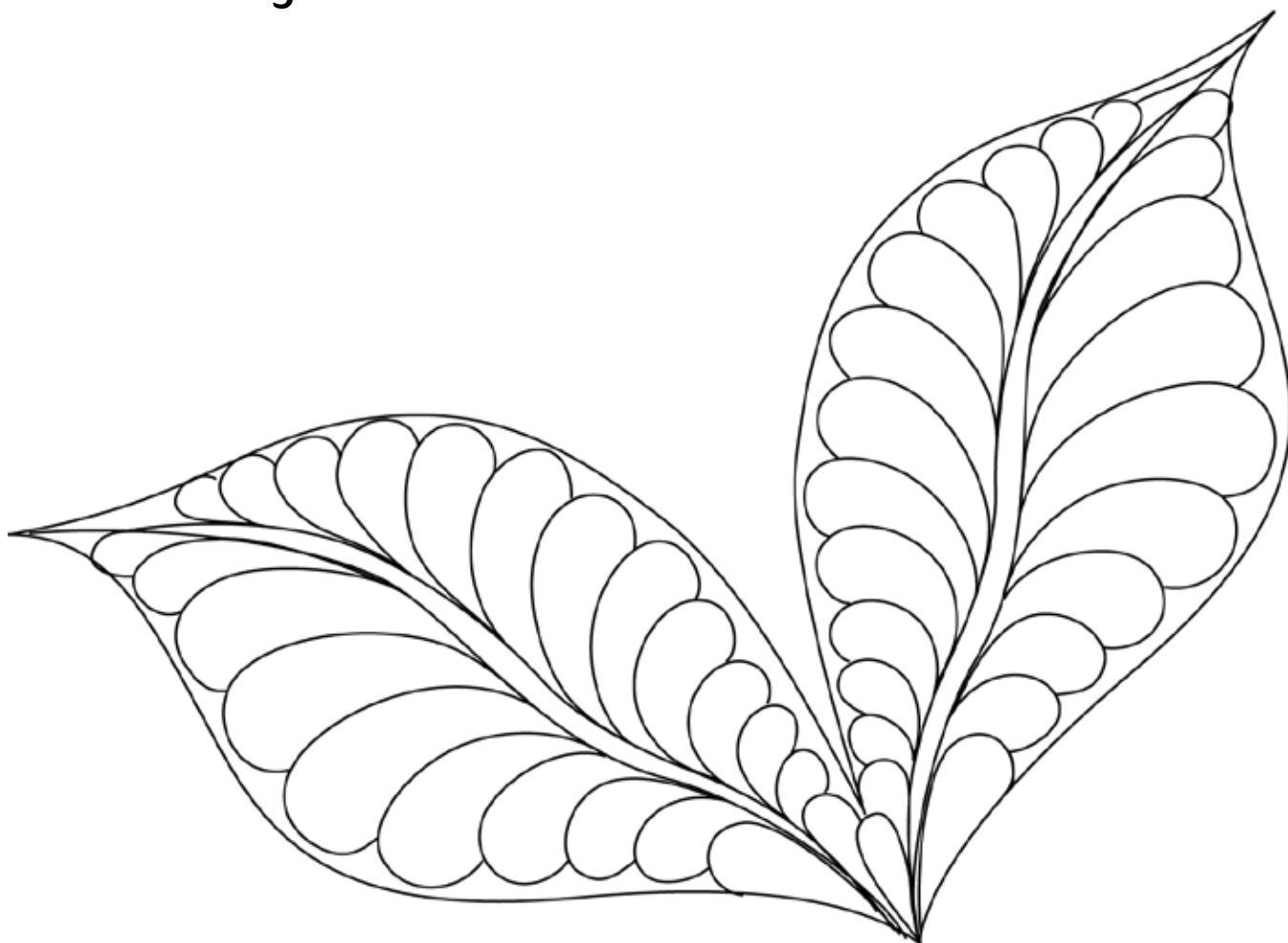
11. Quilt a gently wavy line to the bottom corner.



12. Repeat the steps quilting a second feather on the other side.



Give it a Try



Option #3 - Echoes

If feather and fillers aren't your type of thing, try quilting echo lines in the area. Add as many or as few lines as you prefer, or add pops of texture with different filler designs.





Quilting the White Area

As we work our way through the panel, we are going to continue to see irregularly spaced areas. Quilting these types of spaces can be tricky, but the more you practice, the easier it will become!

Option #1 – Curvy Transitions

It's one thing to know how to quilt a design, it's a completely different thing to know how to maneuver your way through an area. This design option covers both!



1. Starting from the purple teardrop, quilt a line that curves to the bottom part of the pink arc.



2. Quilt along the inner part of the pink arc to the opposite point.



3. Quilt a line that echos back to the opposite side of the pink arc



4. Travel along the outer edge of the pink arc to the opposite side.

5. Quilt a line that curves to the next purple teardrop. Repeat the steps above working your way around the mandala.





Give it a Try





Option #2 – Continuous Curve

Instead of echoing inside of the pink arc, try quilting a continuous curve design.

1. From the outer corner of the pink arc, quilt a line that curves out to the top point of the red area.
2. Quilt lines that arc out and back to the same point, then quilt the last arc so that it moves onto the opposite point of the pink arc. Travel along the edges of the pink arc, the continue onto the next section.



Give it a Try





Filling in the Rest of the Gaps

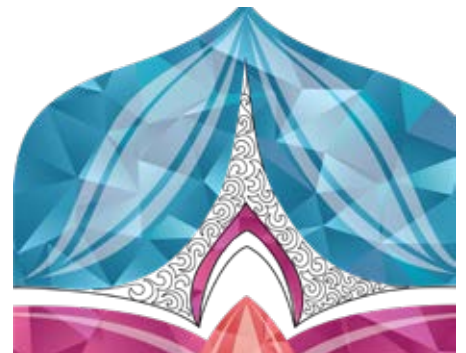
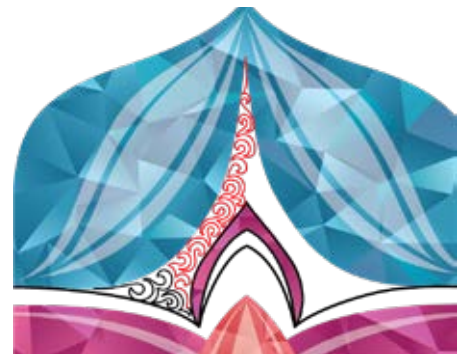
To fill in any gaps in the quilting, try quilting more echo lines or use a filler design, such as swirls.

Option #1 - Echoing

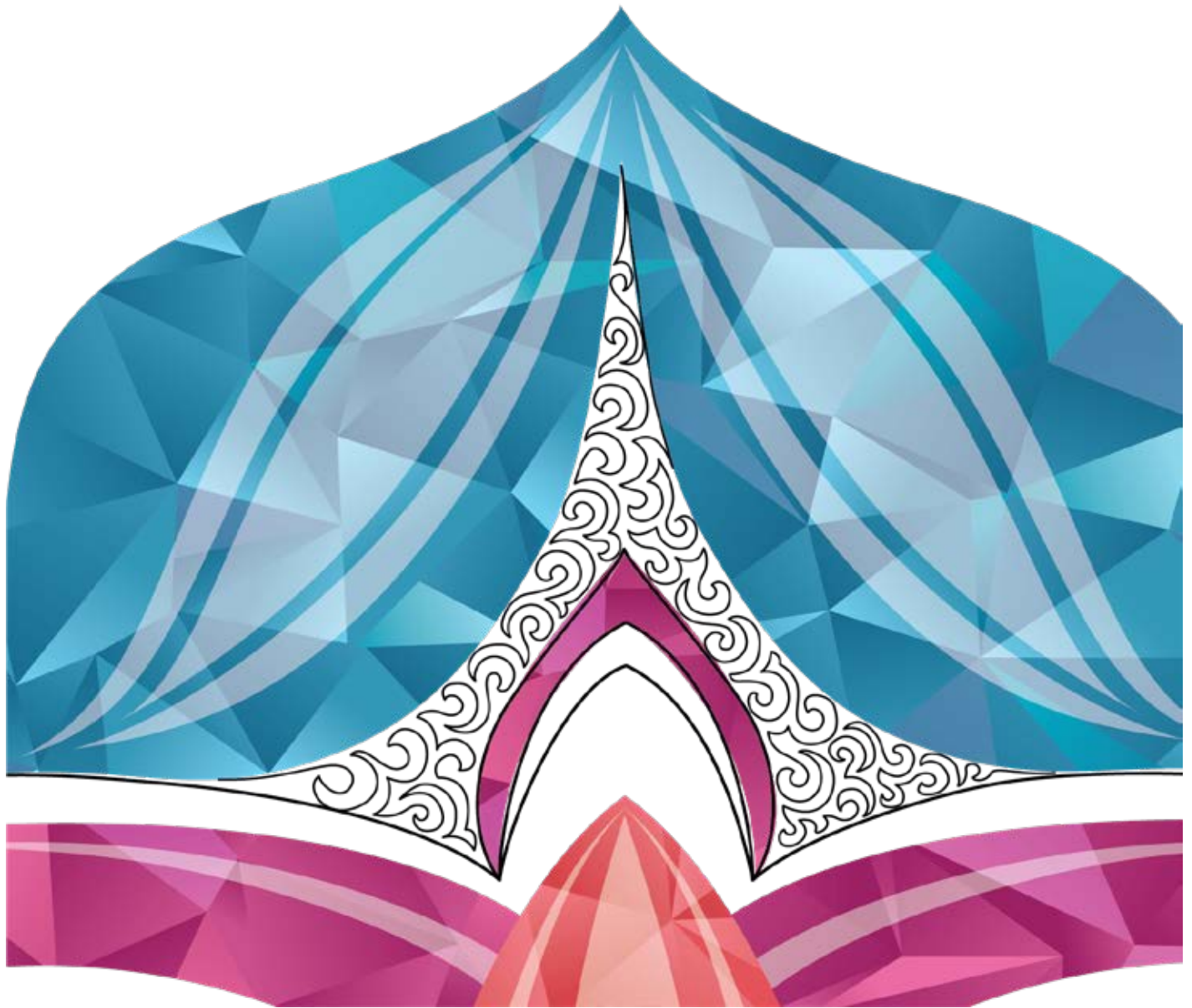


Option #2 - Filler

I personally think that filling in the gaps with a filler design, such as swirls, looks the best! However, maneuvering in and out of the tight spots of this area can be a little tricky. Be sure to use echoing to move around as needed and use traveling along the edge to get “unstuck” if necessary.



Your Turn



Audtioning Designs

