

# Dot

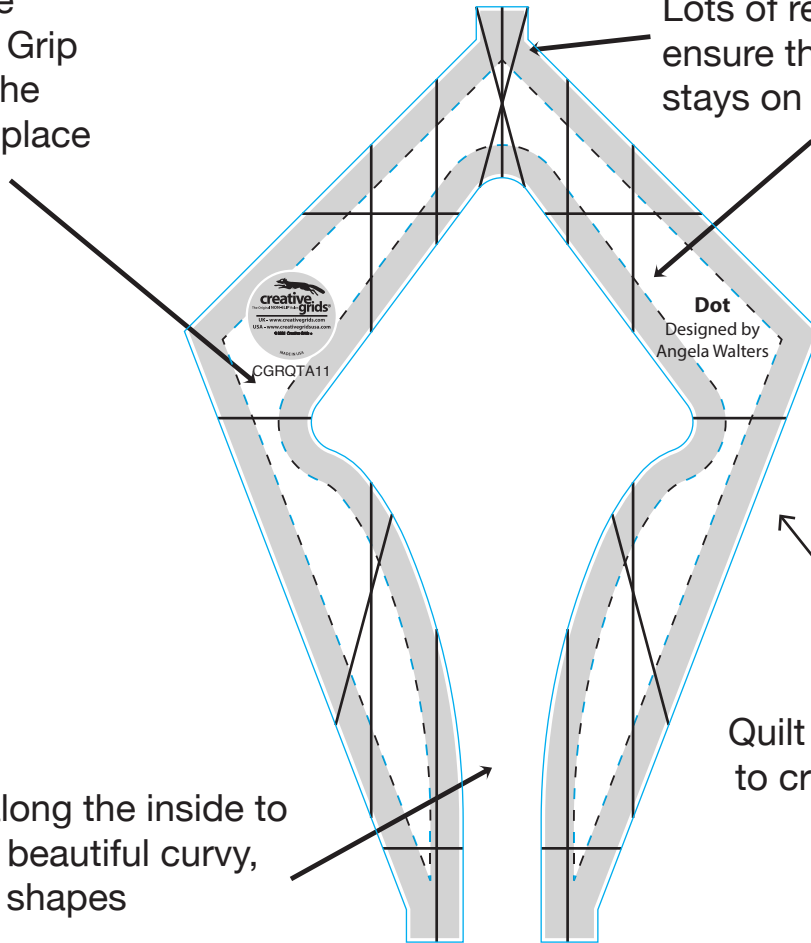
By Angela Walters

*Dot is like getting two rulers in one, making it an all-around functional tool!*

quiltingismytherapy.com

Creative Grids® Grip keeps the ruler in place

Lots of reference lines to ensure that your quilting stays on track!

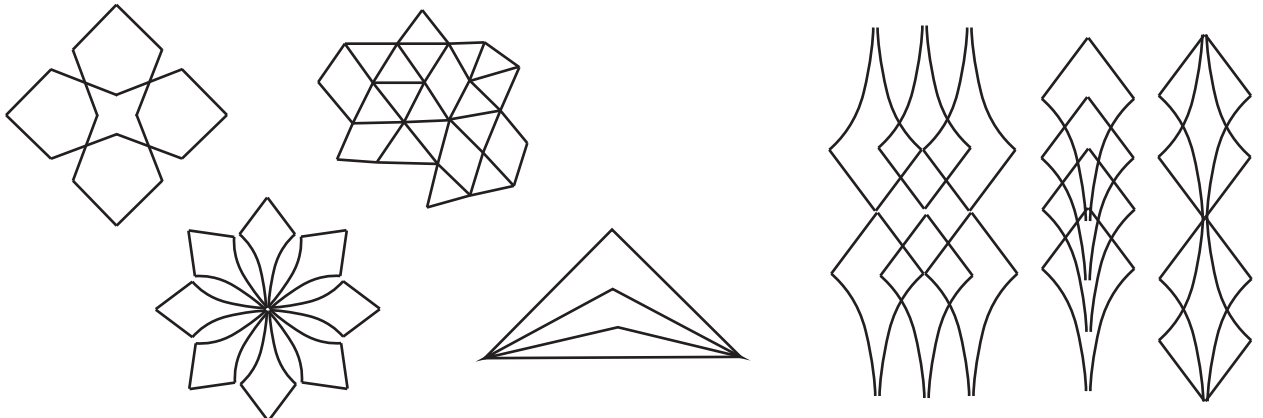


Quilt along the inside to create beautiful curvy, pointy shapes

Quilt along the outside to create straight lines in different angles

*Use Dot for:*

**Geometric Shapes, Motifs, Border Designs, Echoing & More!**



Quilting with the Dot Ruler

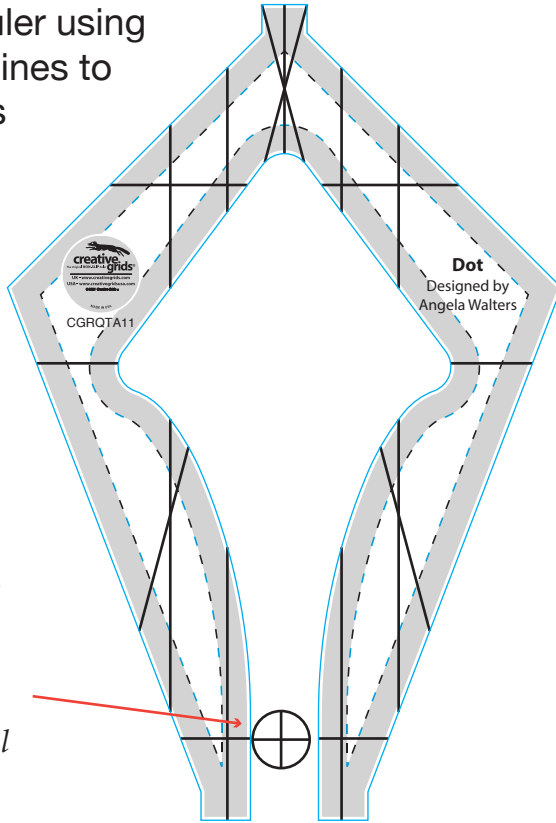
# Dot

By Angela Walters

## Using the Cut Out

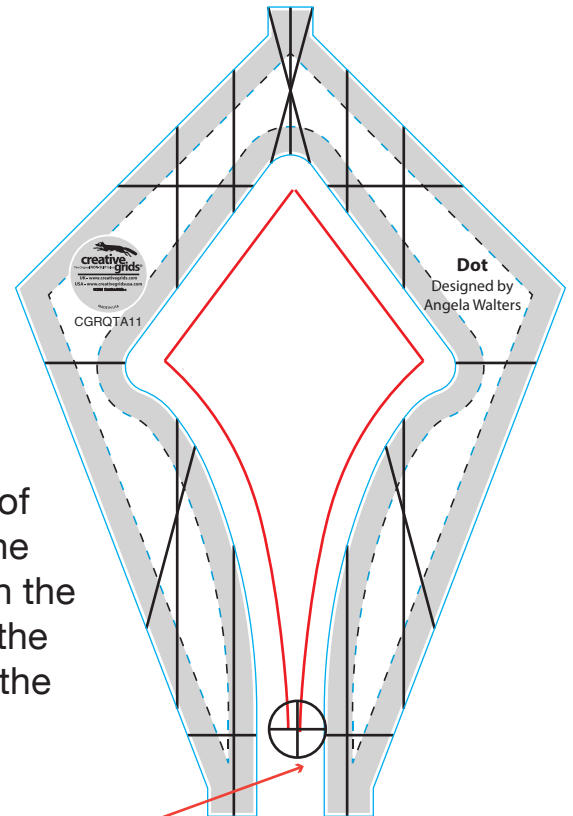
Quilt along the inside of the ruler to create some curvy, point shapes.

Position ruler using reference lines to ensure it is straight.



The foot of the machine should be touching the left side of the cut out. Align the needle with the horizontal reference line.

Quilt along the inside of the ruler, starting on the left side and ending on the right side. Stop when the needle is aligned with the bottom reference line.

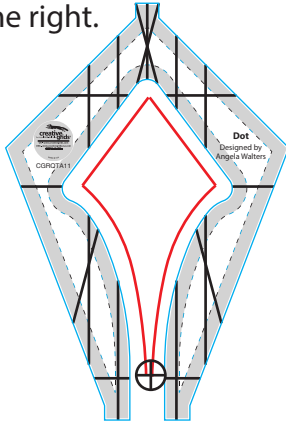


The foot of the machine should be touching the right side of the cut out.

## Cut out Motifs

Rotate the ruler to create motifs with the cut out portion of the ruler.

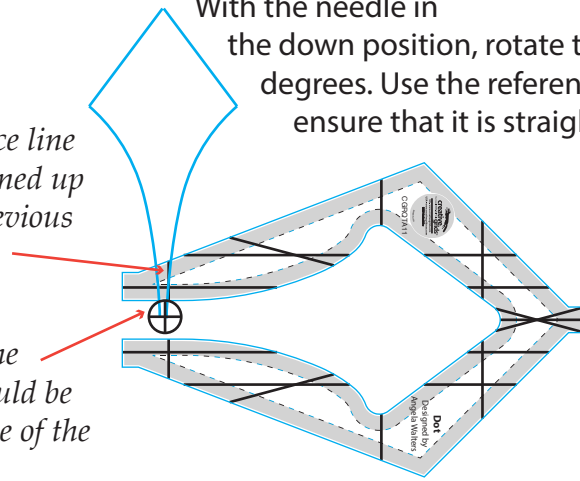
Quilt along the inside of ruler, starting on the left side and ending on the right.



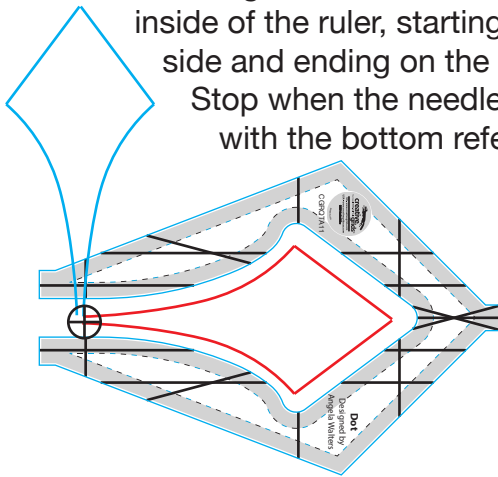
The reference line should be lined up with the previous quilting.

The foot of the machine should be along the side of the ruler.

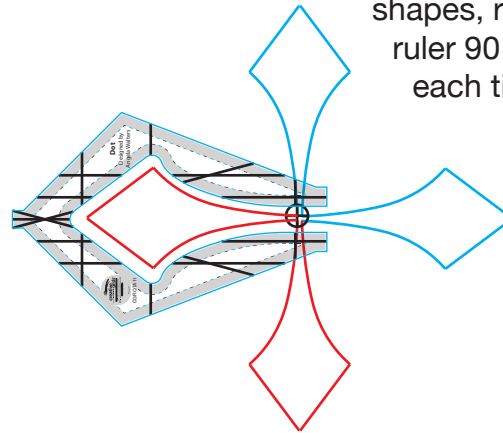
With the needle in the down position, rotate the ruler 90 degrees. Use the reference lines to ensure that it is straight.



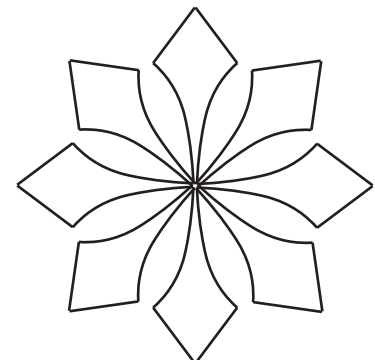
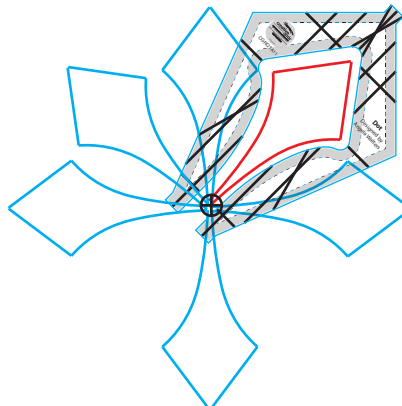
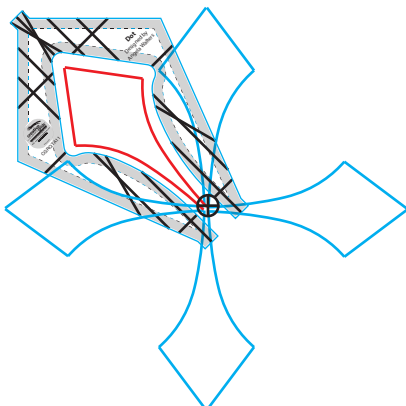
Quilt along the inside of the ruler, starting on the left side and ending on the right side. Stop when the needle is aligned with the bottom reference line.



Repeat to quilt two more shapes, rotating the ruler 90 degrees each time.



To create an even more complex looking motif, add shapes in between the previously quilted ones.

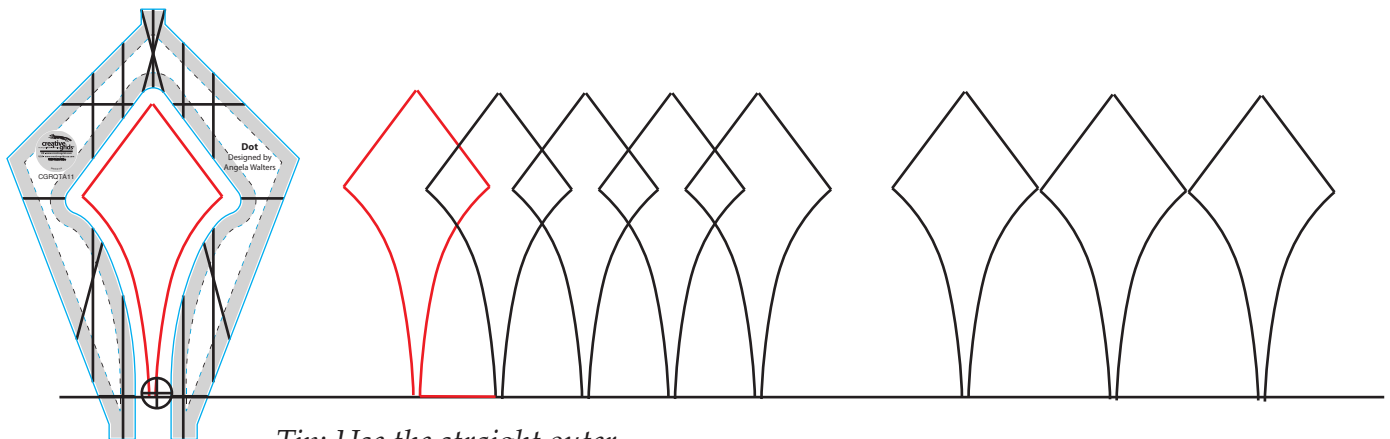


# Dot

By Angela Walters

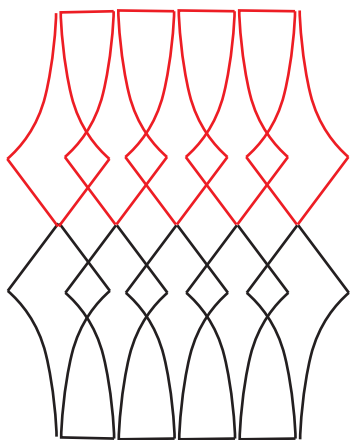
Use the cut out center of the ruler to create a myriad of designs!

Quilt them in a row to create a design perfect for large borders. Line the ruler up with the edge of the area, then quilt along the inside. Travel along the edge, then repeat. The closer you quilt the shapes, the more they will overlap.

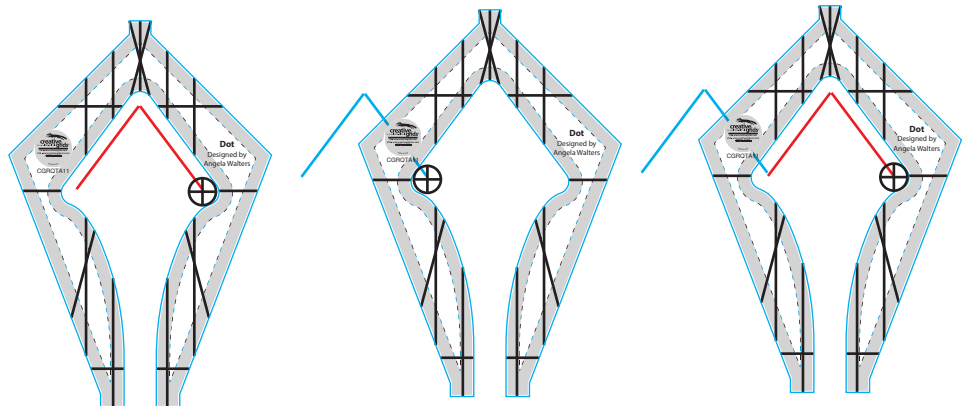


*Tip: Use the straight outer edge to travel along the seam.*

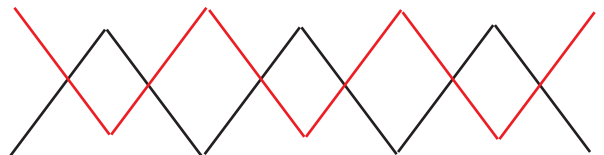
For an even more complex design, quilt a row of overlapping shapes, then quilt another row that mirrors the first one. Be sure to take your time and use your reference lines to ensure they stay straight.



Quilt along the top part of the cutout only to quilt chevrons quickly.



*Overlap two rows of chevrons for a diamond border design.*

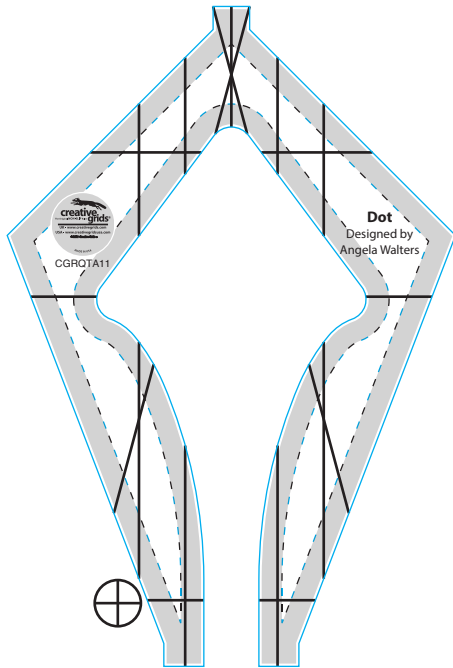


# Dot

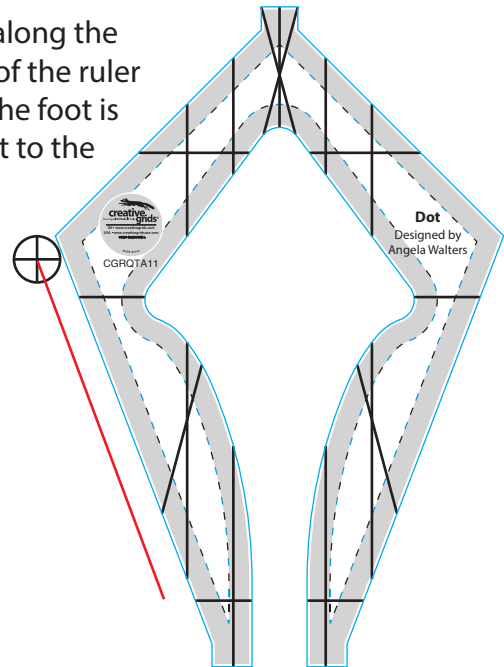
By Angela Walters

## Using the outside

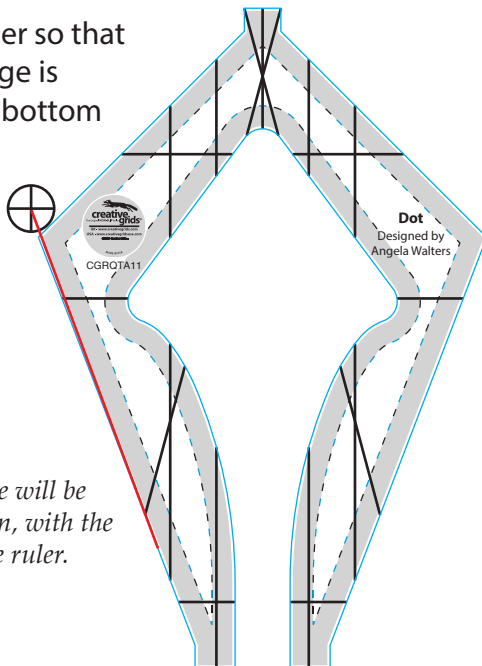
Start with the foot of the machine on one side of the ruler. Align the needle with the bottom reference line.



Quilt along the edge of the ruler until the foot is almost to the point.

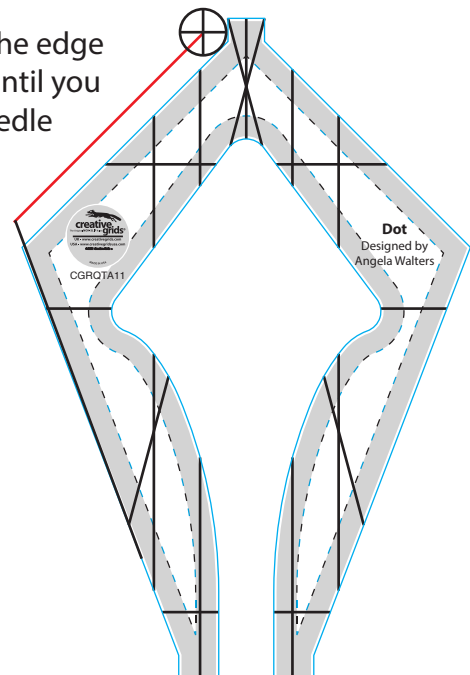


Shift the ruler so that the next edge is against the bottom of the foot.



*The quilted line will be parallel, or even, with the first edge of the ruler.*

Quilt along the edge of the ruler until you reach the needle stop.

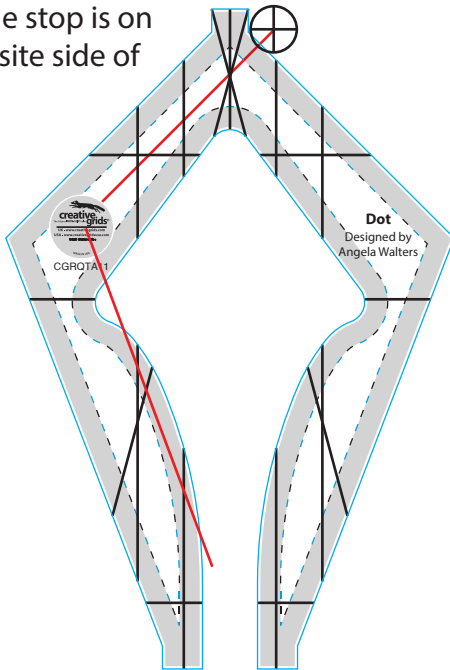


# Dot

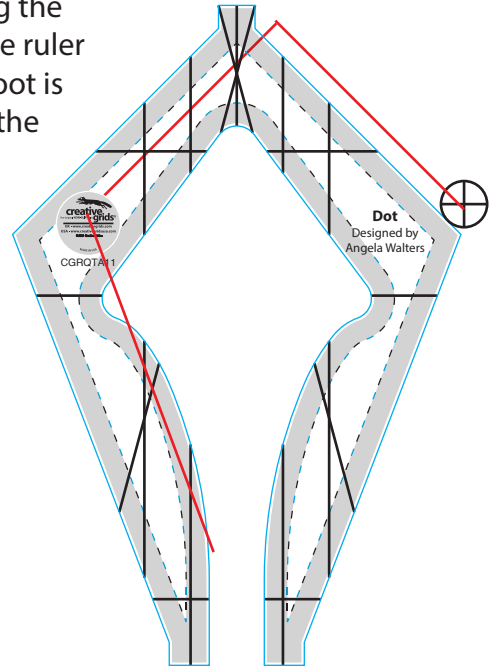
By Angela Walters

## Using the outside

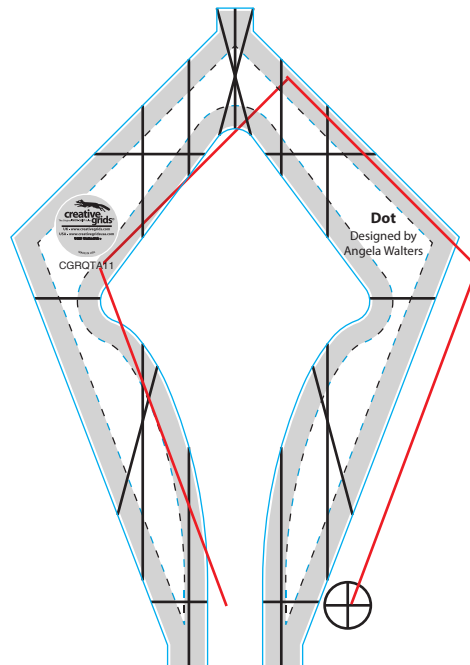
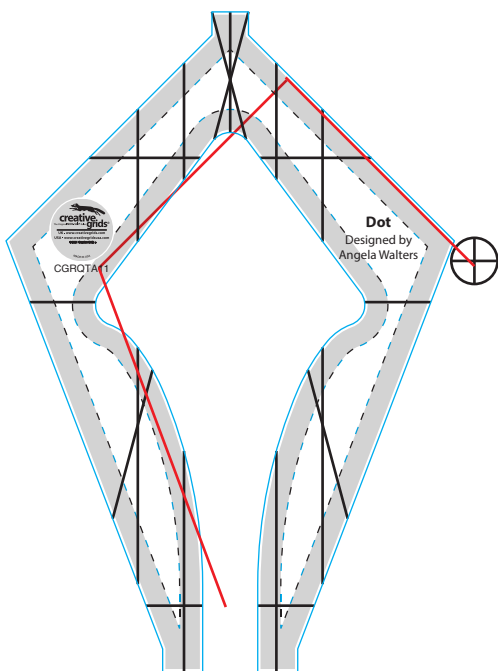
Shift the ruler so that the needle stop is on the opposite side of the foot.



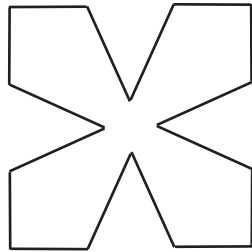
Quilt along the edge of the ruler until the foot is almost to the point.



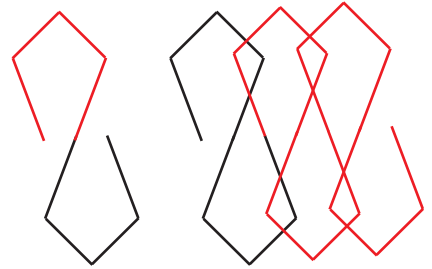
Shift the ruler so that the next edge is against the side of the foot. Then quilt along the edge, stopping at the reference line at the bottom.



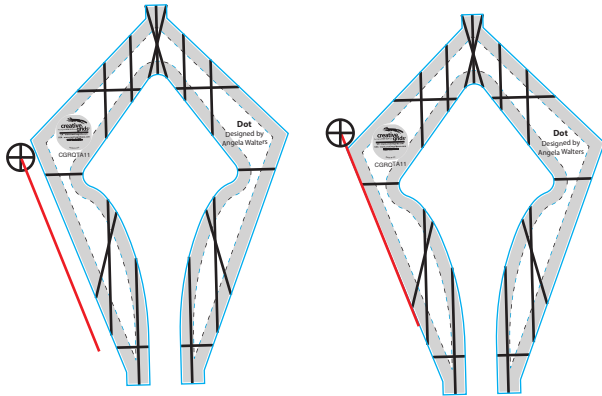
Quilt four wedge shapes, rotating each one, to make a motif



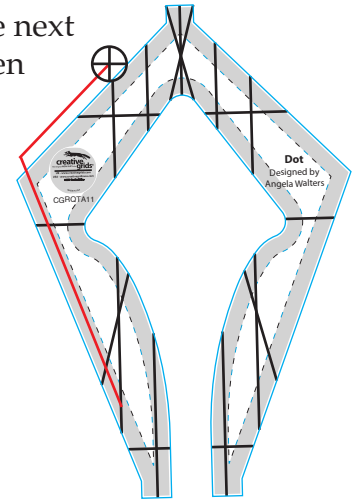
Quilt wedges, alternating directions to make a bigger design.



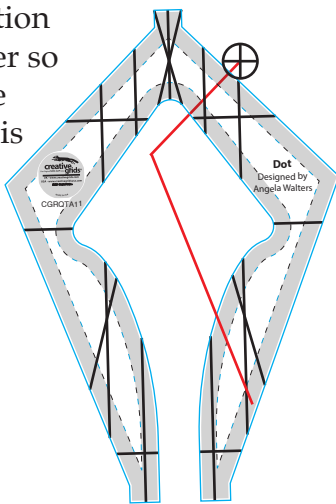
Use the reference lines to make a narrower wedge design. Quilt along the first side as normal, repositioning the ruler when you get to the point.



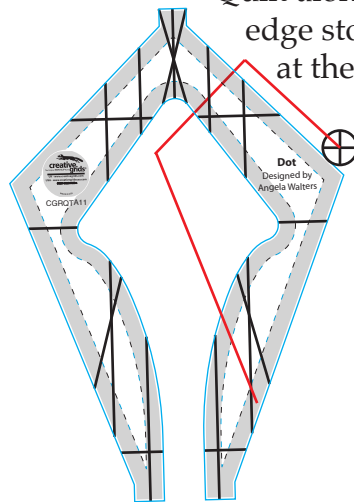
Quilt along the next edge, stop when the needle is aligned with the first reference point.



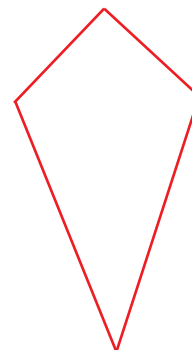
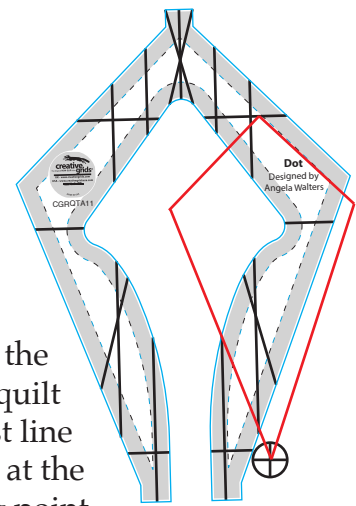
Reposition the ruler so that the needle is above the same reference line on the other side.



Quilt along the edge stopping at the point.



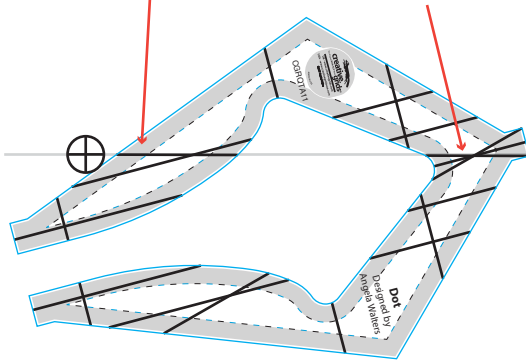
Reposition the ruler and quilt the last line ending at the starting point.



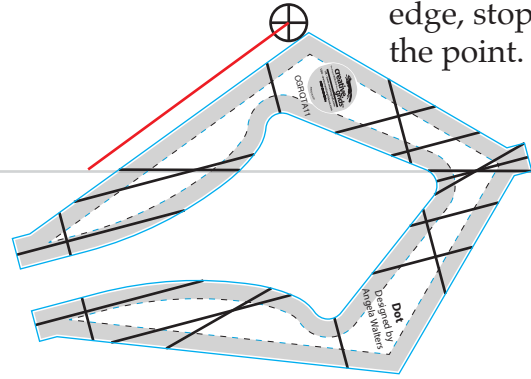
## Chevrons

The reference lines on the ruler will help you quilt diagonal lines of different angles.

Align this reference line with the edge of an area (or a marked line.)

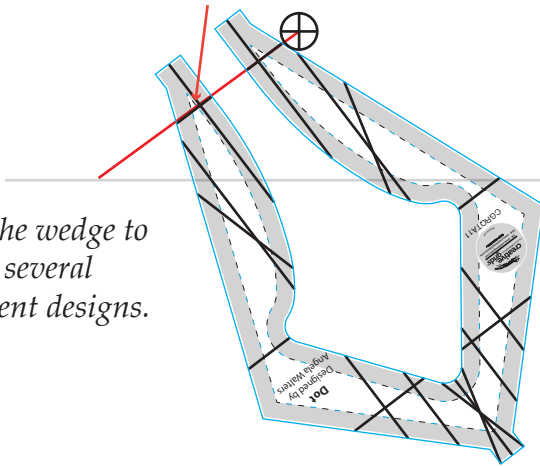


Quilt along the edge, stopping at the point.

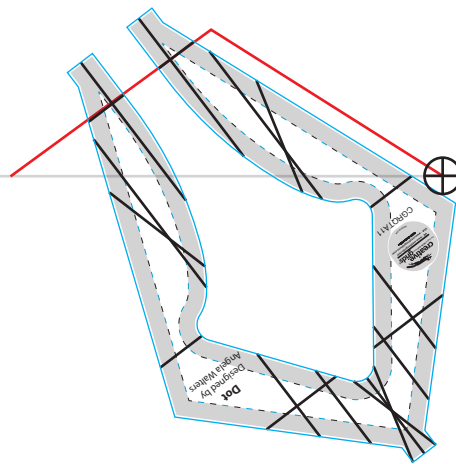


Rotate the ruler so that it angles down. The two reference lines at the bottom of the ruler should line up with the previously quilted line.

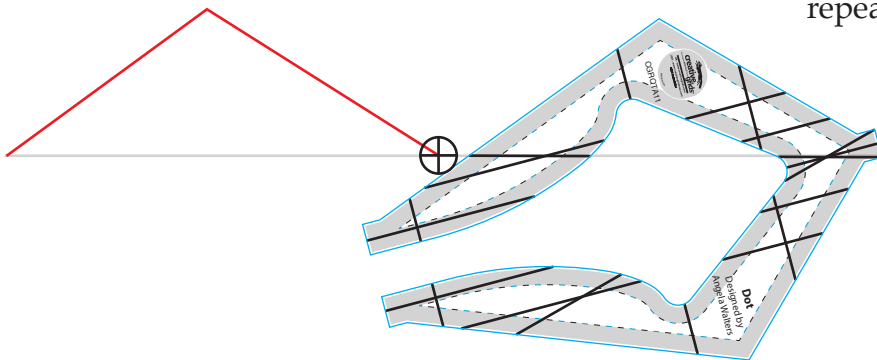
Quilt along the edge of the ruler stopping at the edge of the area.



Use the wedge to make several different designs.



Reposition the ruler and repeat, quilting chevrons.

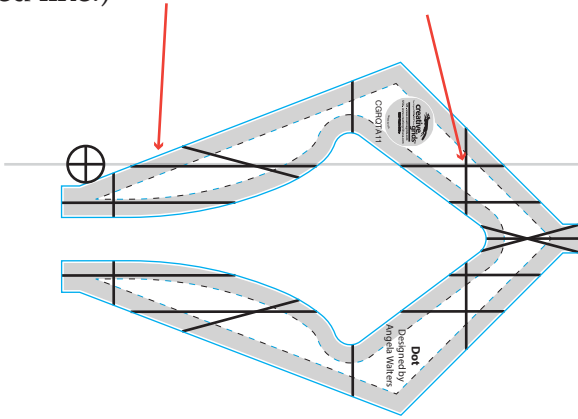




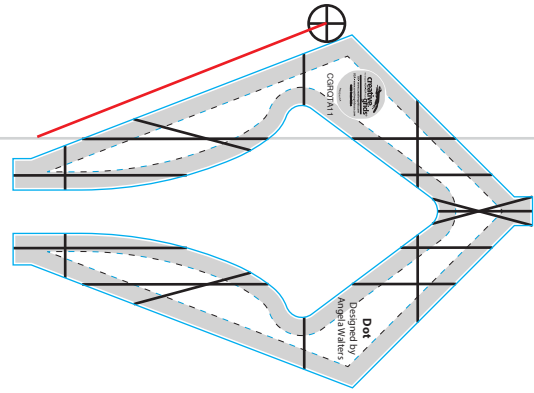
## Chevrons

*For shorter, wider chevrons, use a different reference line*

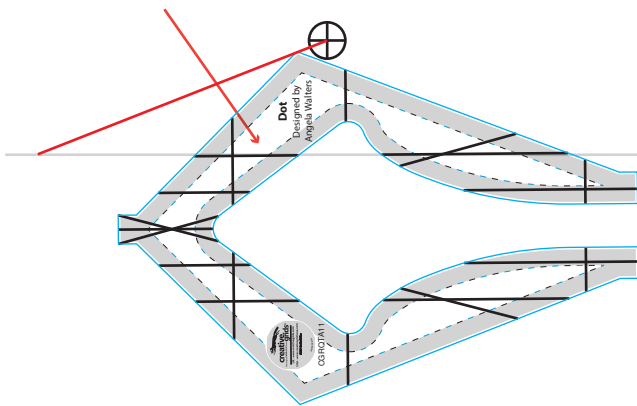
Align this reference line with the edge of an area (or a marked line.)



Quilt along the edge, stopping at the point.



Flip the ruler over and line up the reference line on the seam.



Quilt along the edge of the ruler stopping at the edge of the area.

