

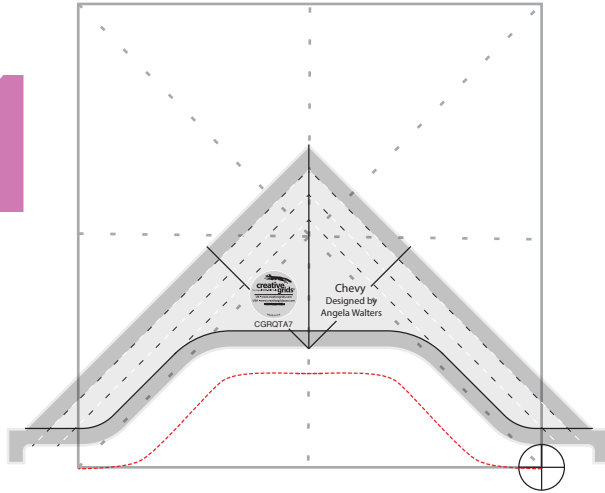
Learn how to
**MASTER
RULERS**

A FREE CLASS WITH ANGELA WALTERS

For more info:
Visit AWRulers.com

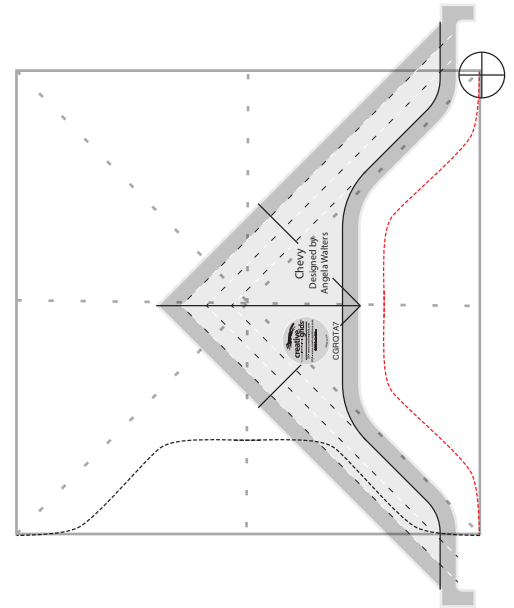
Quilting A Motif with Chevy

1



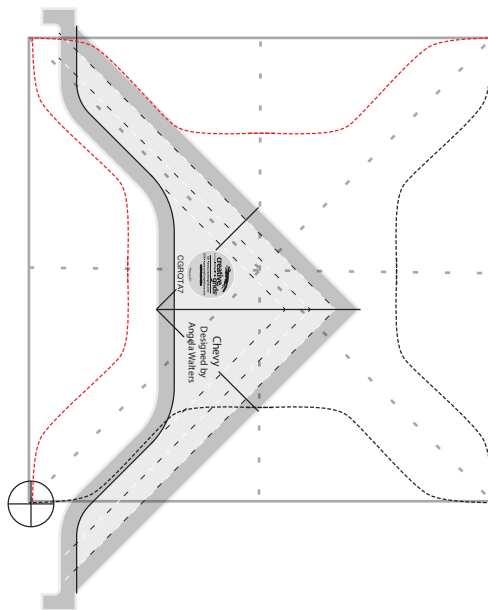
Starting in one corner of the block, align chevy so that the center reference line is directly above the center of the side of the block. Quilt along the edge of the ruler stopping at the next corner.

2



Rotate the ruler and repeat quilting along the edge until you reach the next corner.

3



Repeat on all four sides until you return to the starting point.

Taj Tip:

Using a "Designs with Lines" Stencil will help you easily mark reference lines on your block, ensuring that the motif is as centered as possible.

Learn how to
**MASTER
RULERS**

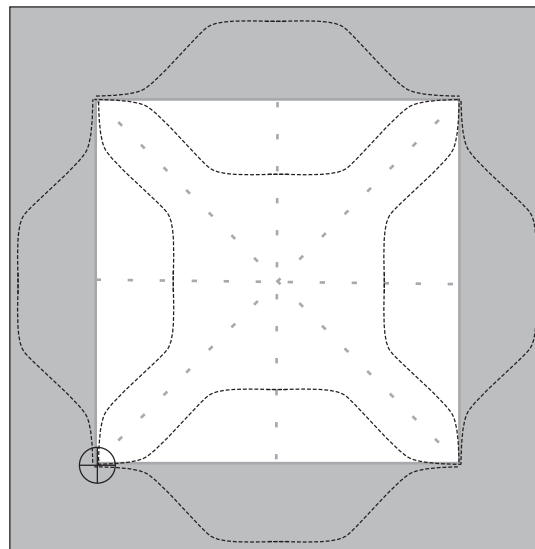
A FREE CLASS WITH ANGELA WALTERS

For more info:
Visit AWRulers.com

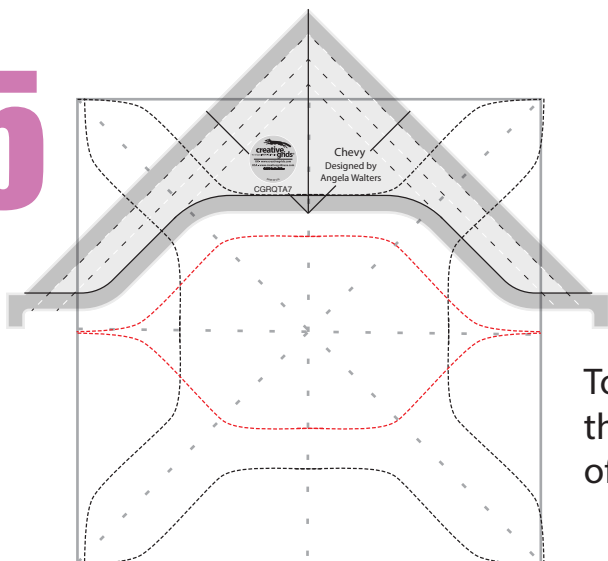
Quilting A Motif with Chevy

4

You can also use Chevy to quilt the same shape outside the block. This is a great way to use the quilting to incorporate multiple parts of a block.

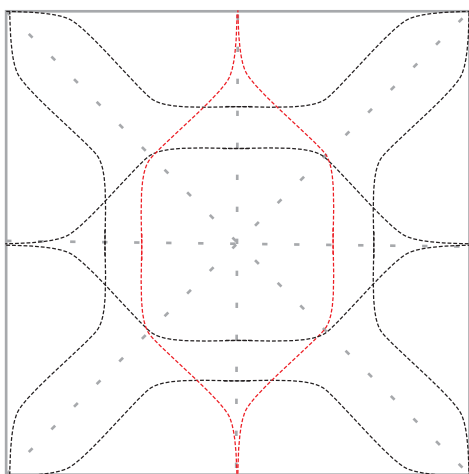


5



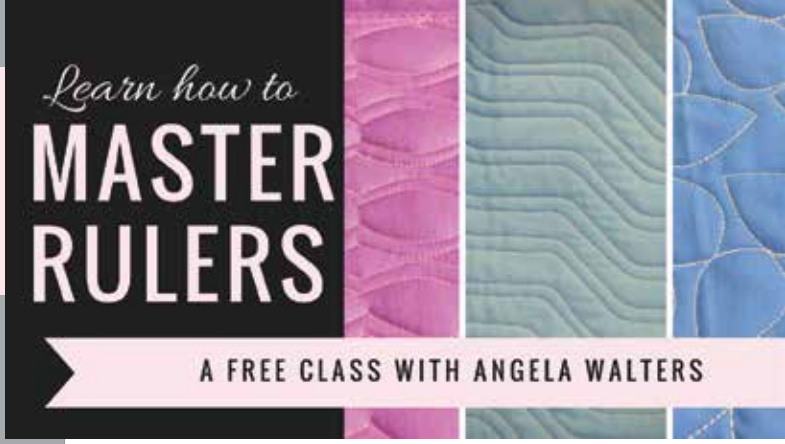
To add more detail to the quilt block, quilt the same shape starting on the center point of one of the sides of the block.

6

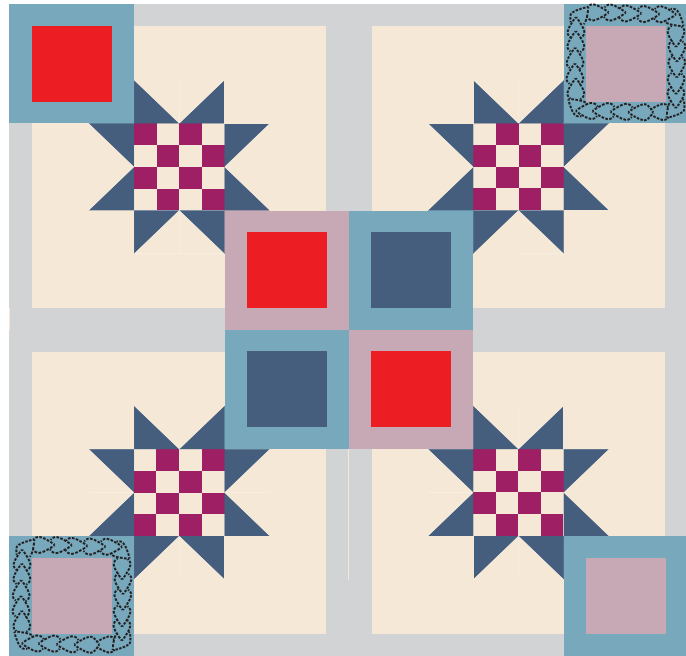


Repeat on the opposite side of the block.





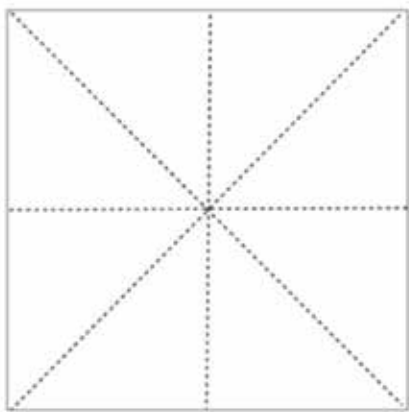
For more info:
Visit AWRulers.com



Class Quilt

If quilting along with me on the class quilt, use Chevy to quilt motifs in the squares highlighted in red. You can quilt the motif I showed you in the lesson, or create your own!

Suggested Products:



Designs with Lines Stencil Basic
8 Lines



Pounce Pad Stencil Chalk - Blue

To Purchase visit: AWRulers.com