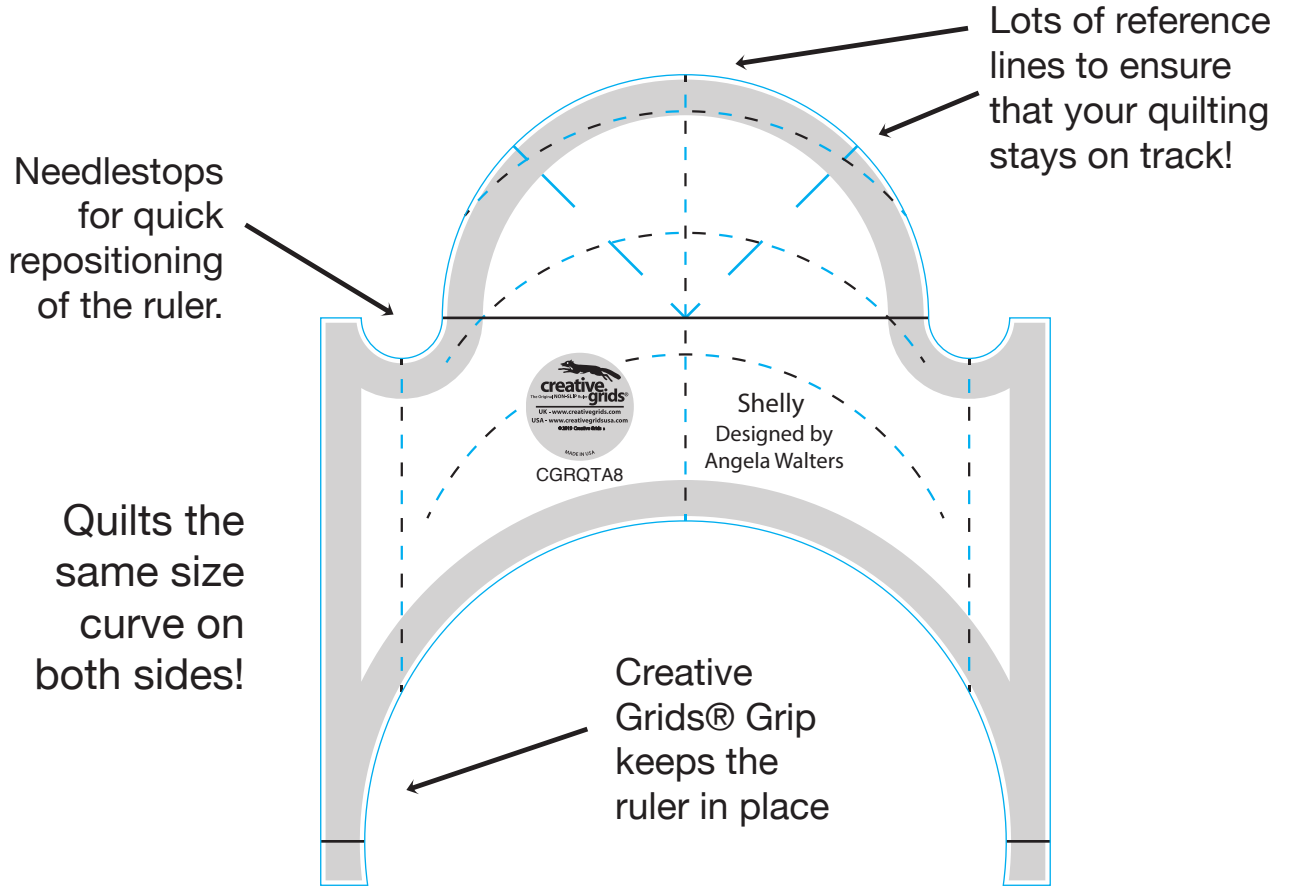


# Shelly

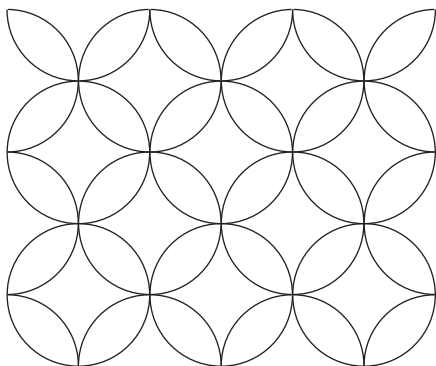
By Angela Walters

Shelly is the perfect quilting pal to help you quickly and efficiently quilt clamshells, orange peels, and so much more!

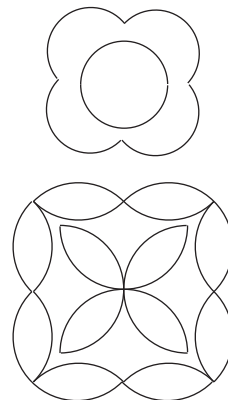


Use Shelly for:

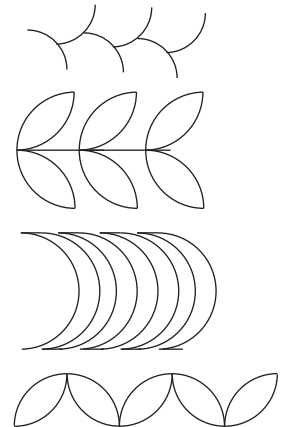
### Allover Designs



### Block Designs



### Border Designs



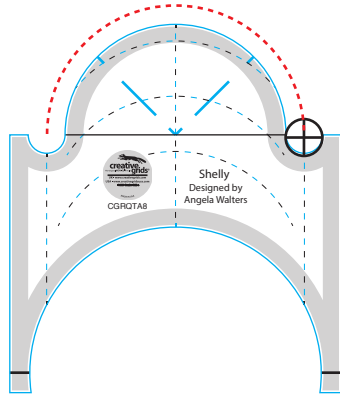
# Shelly

By Angela Walters

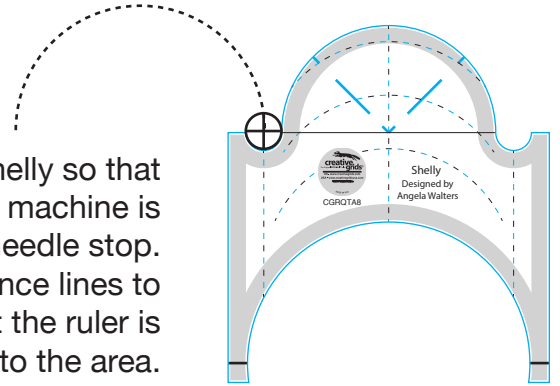
## How to Quilt Orange Peels

quiltngismytherapy.com

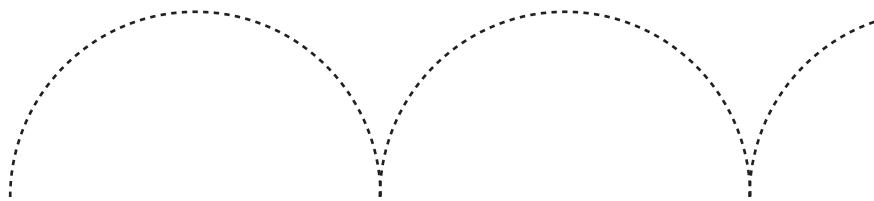
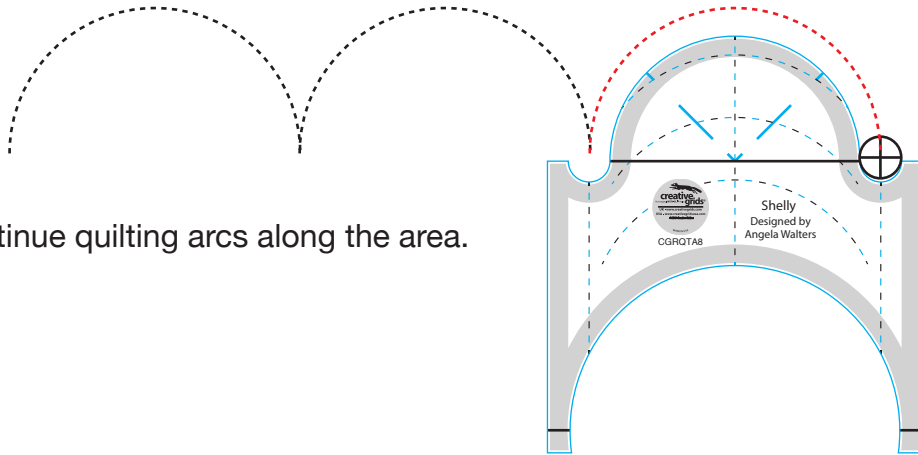
Align the ruler along the edge of the quilting area. Quilt from one needle stop to the other



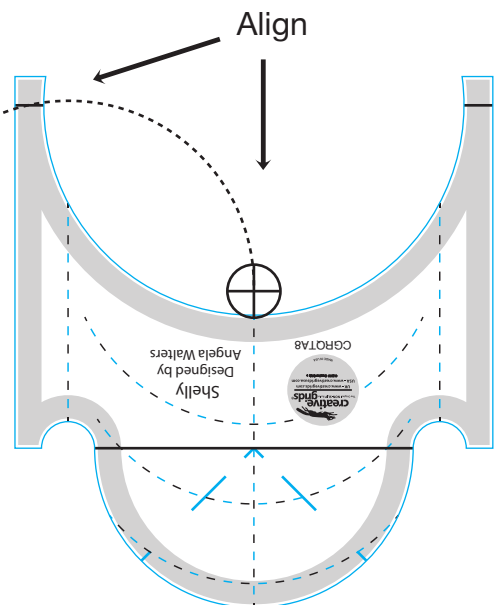
Reposition Shelly so that the foot of the machine is in the first needle stop. Use the reference lines to ensure that the ruler is straight to the area.

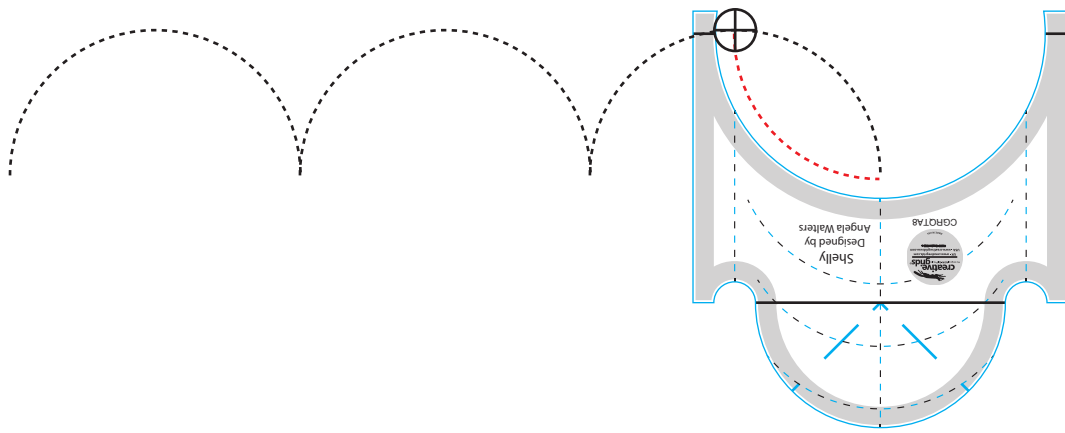


Continue quilting arcs along the area.

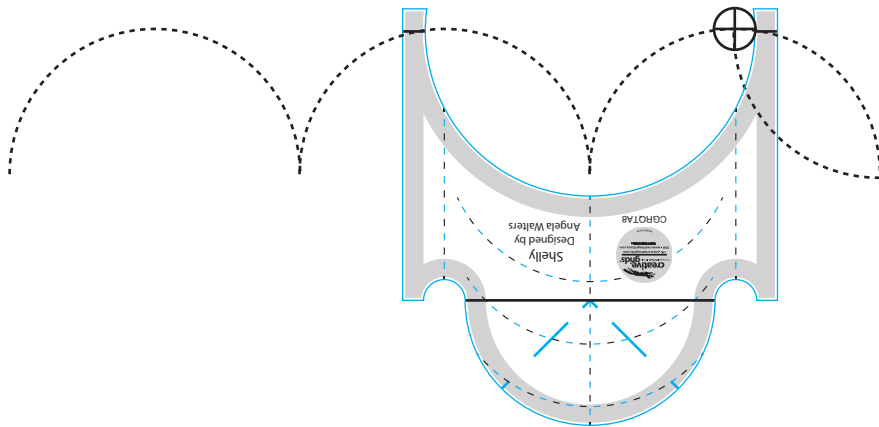


To quilt the upside down portion of the orange peels, flip Shelly around. Align the middle reference line with the needle and line up the reference mark at the ends with the previously quilted arc.

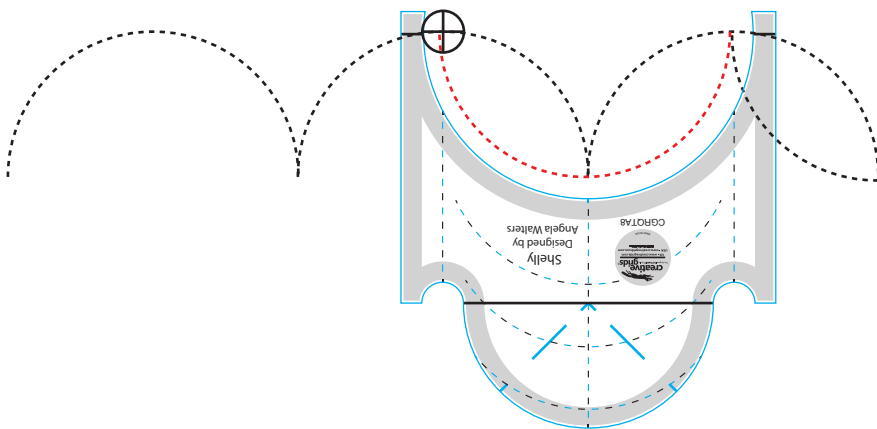




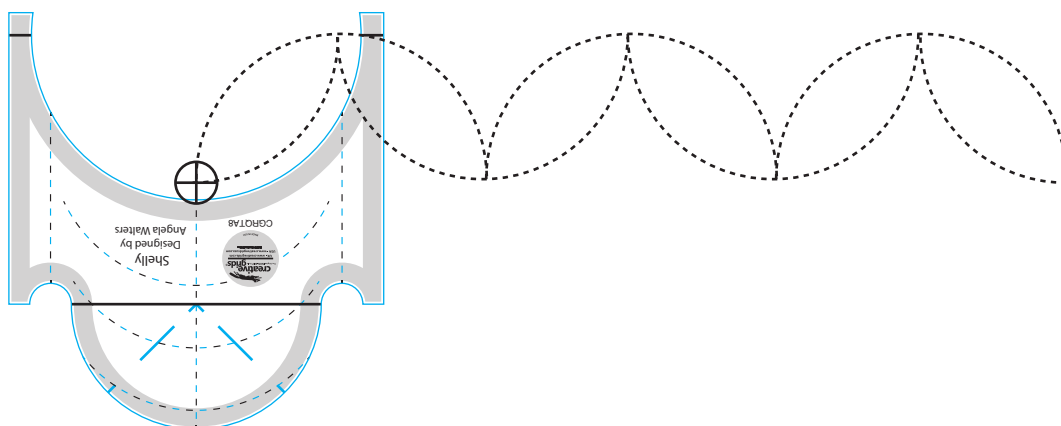
Quilt along the ruler, stopping when you reach the previously quilted arc.

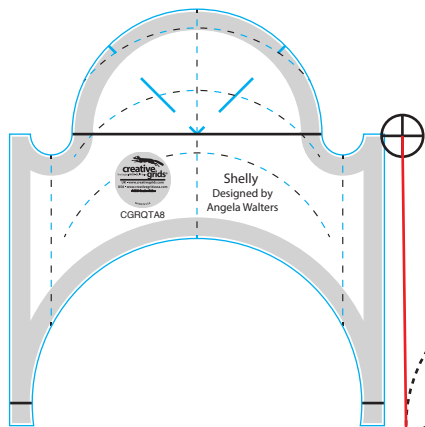


Reposition the ruler so that the both reference lines at the ends are lined up on the previously quilted arc. The middle reference line should be about a 1/4" below the point of the arcs.

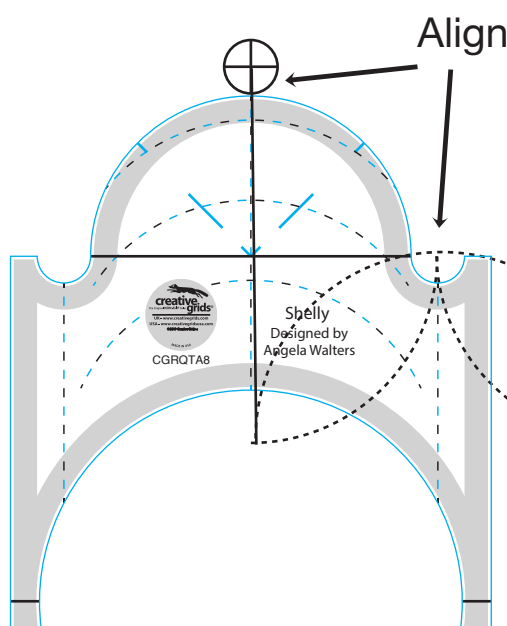
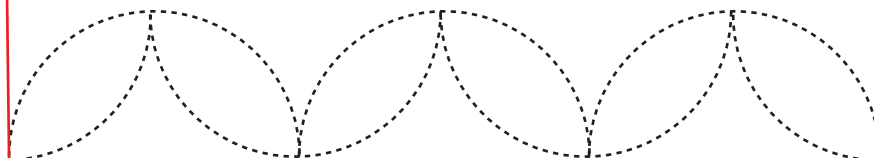


Quilt along the ruler until you reach the previously quilted arc. Continue until you get to the starting point.

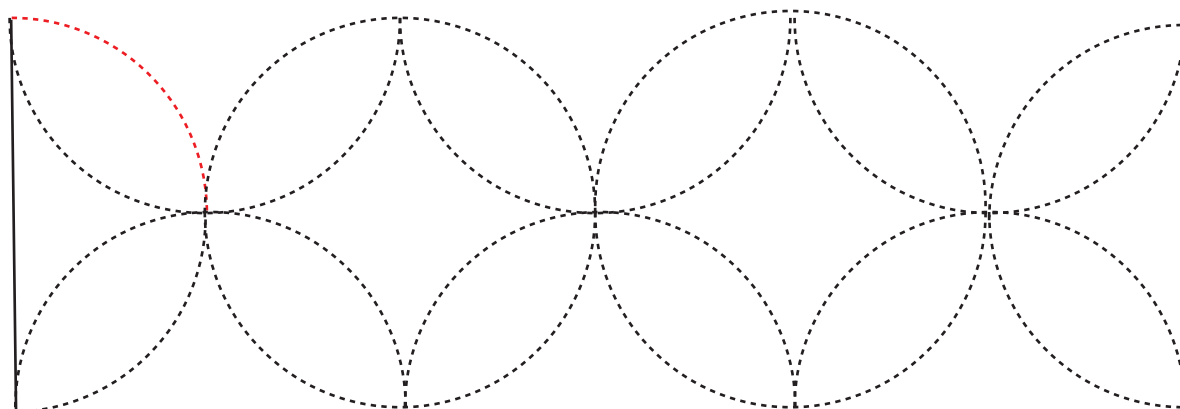
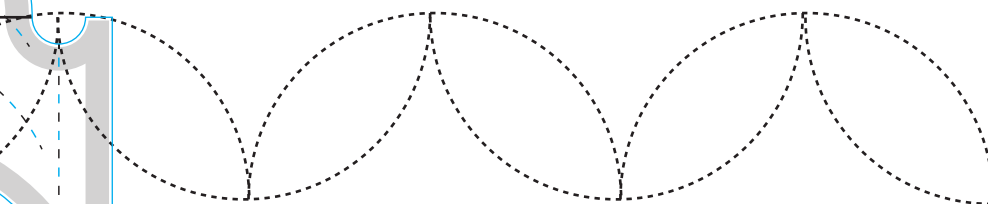




Travel along the edge of the area quilting along Shelly's straight edge.



Reposition the ruler so that the middle reference mark is along the edge of the area and the middle reference line is even with the first



Quilt the next row of arcs and repeat the steps above to quilt the second row of orange peels.