

Wavy lines with Elvira

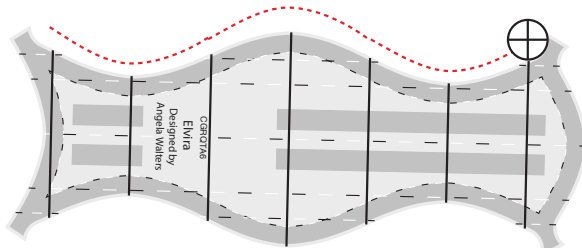
Learn how to
**MASTER
RULERS**

A FREE CLASS WITH ANGELA WALTERS

For more info:
Visit AWRulers.com

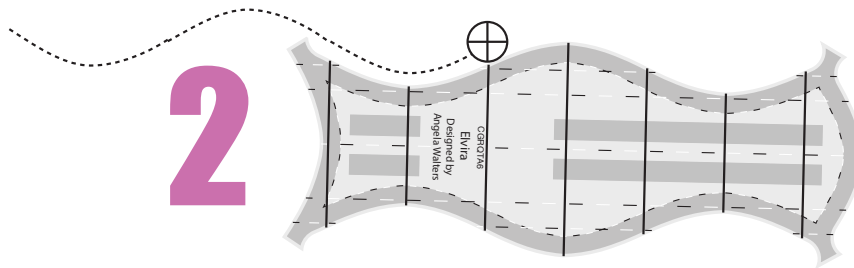


1



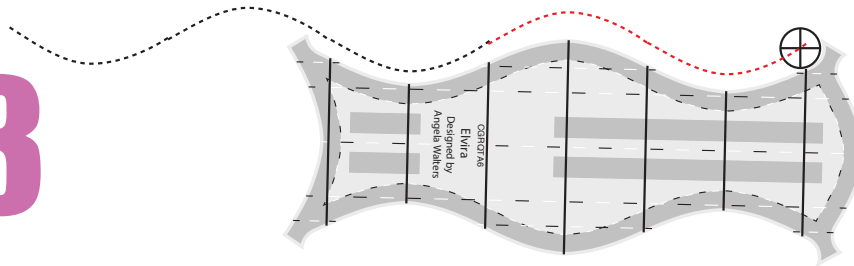
Align the ruler in the direction that you want to quilt. Quilt along the ruler until you get the needlestop.

2



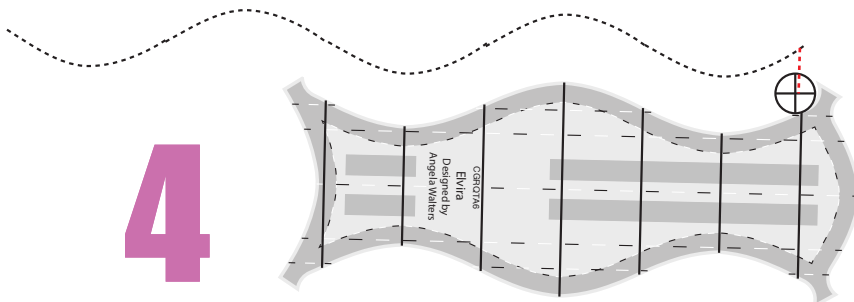
To make the wavy line continuous, reposition the ruler so that the needle is lined up with the 3rd reference line.

3



Quilt along the edge of the ruler until you reach the needlestop.

4



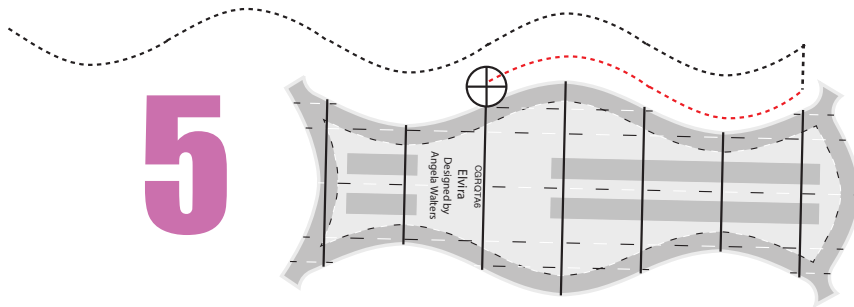
Repeat until you reach the edge of the area. Travel along the seam about 1/2" then reposition ruler so that it's parallel to the previously quilted line.

Learn how to
**MASTER
RULERS**

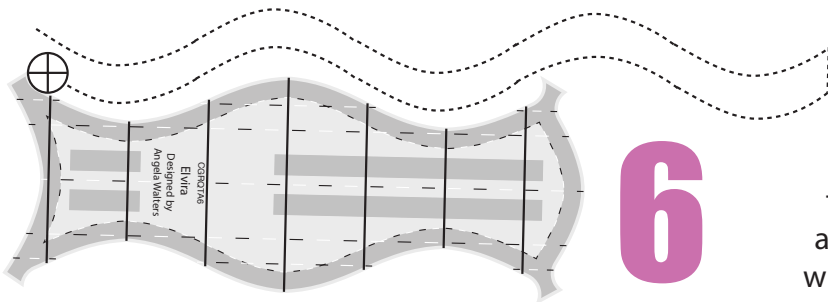
A FREE CLASS WITH ANGELA WALTERS

For more info:
Visit AWRulers.com

5



Quilt along the ruler until you reach the third reference line.



6

Reposition the ruler so that it is lined up with the needlestop. Continue quilting, repositioning the ruler, traveling along the seam and quilting wavy lines until the whole area is filled in.

Wavy lines with Elvira



Design Tip:

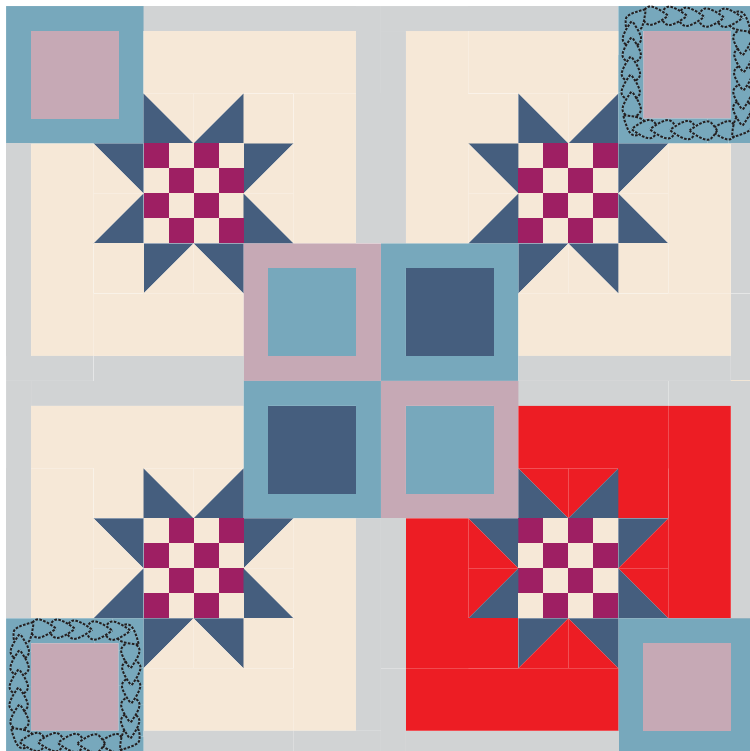
To quilt a bracket-like shape, quilt along the entire ruler each time you reposition it.

Learn how to
**MASTER
RULERS**

A FREE CLASS WITH ANGELA WALTERS

For more info:
Visit AWRulers.com

Wavy lines with Elvira



Class Quilt

If quilting along with me on the class quilt, use Elvira to quilt wavy lines in the area highlighted in red. You can try quilting both variations or just your favorite!



Suggested Products:

Class Quilt Kit



Coordinating Thread
Collection

To Purchase visit: AWRulers.com