

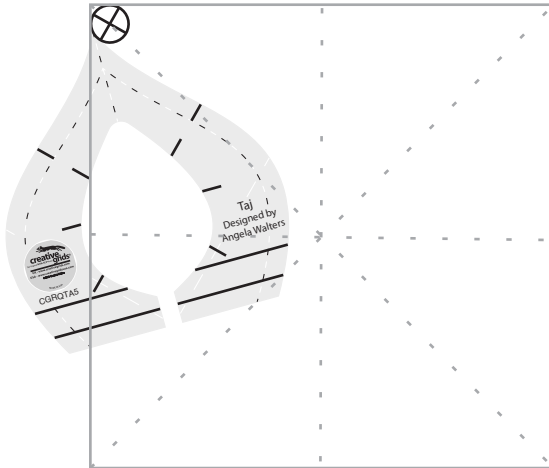
Quilting A Motif with Taj

Learn how to
**MASTER
RULERS**

A FREE CLASS WITH ANGELA WALTERS

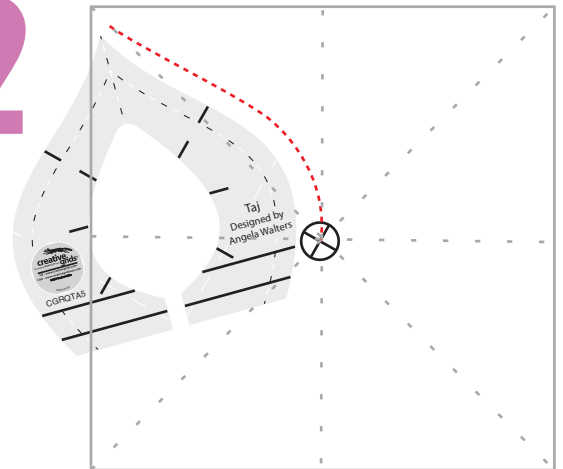
For more info:
Visit AWRulers.com

1



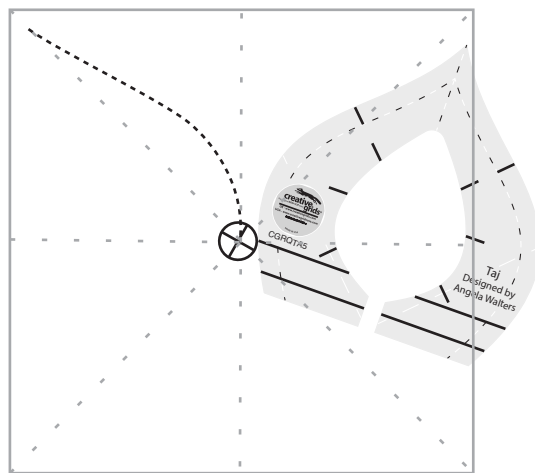
Start with the foot of the machine about 1/4"-1/2" inside of a block corner. Rotate the ruler so that the point makes contact with the foot. Maintaining contact with the foot, position it so that the center of the block is about 1/4" away from some part of the ruler.

2



Quilt along the edge of the ruler, until you are at the center of the block. Stop quilting at the center even if you aren't to the end of the ruler.

3



Reposition the ruler so that it is on the right side of the quilting foot with the point about a 1/4" on away from the marked lines.

Taj Tip:

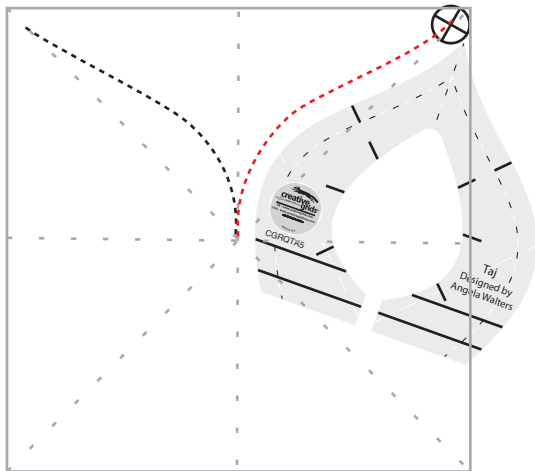
Using a "Designs with Lines" Stencil will help you easily mark reference lines on your block, ensuring that the motif is as centered as possible.

Learn how to
**MASTER
RULERS**

A FREE CLASS WITH ANGELA WALTERS

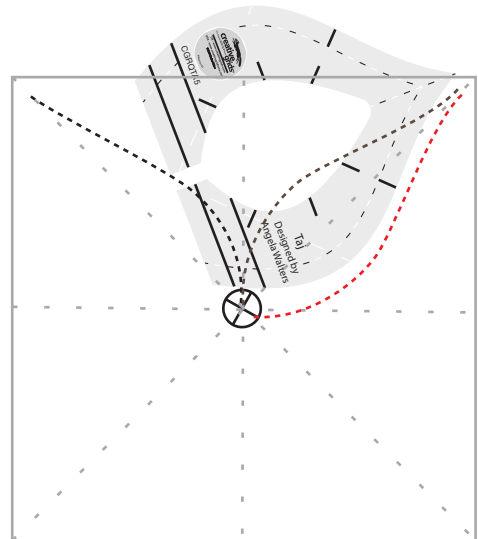
For more info:
Visit AWRulers.com

4



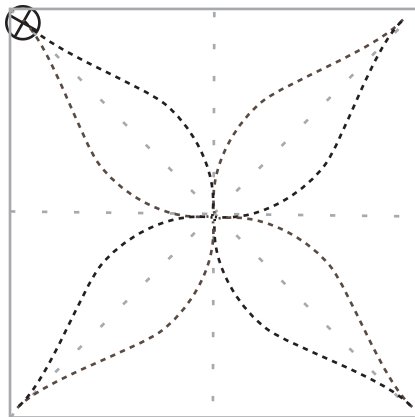
Quilt along the edge of the ruler until you reach the marked line.

5



Reposition the ruler as shown and quilt along the other side of the ruler, returning to the starting point.

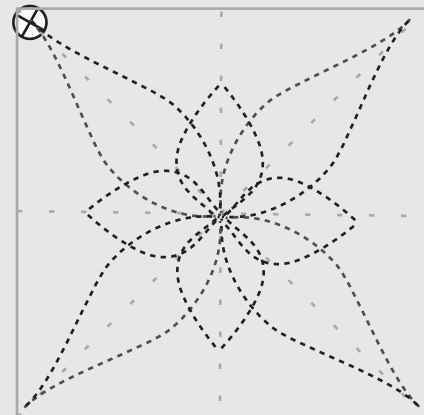
6



Repeat the steps above, quilting curves to all four corners of the block, returning to the starting point.



Design Idea:

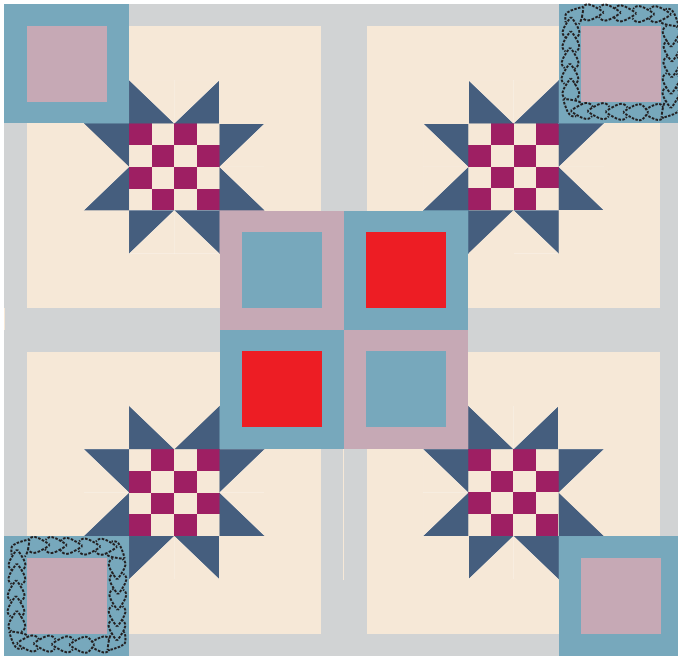


To add more detail, use the inside of the Taj ruler to add more curves on the inside of the motif.

Learn how to
**MASTER
RULERS**

A FREE CLASS WITH ANGELA WALTERS

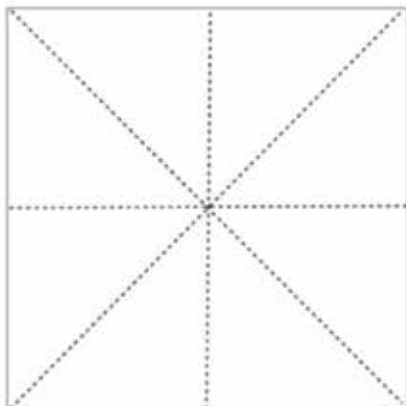
For more info:
Visit AWRulers.com



Class Quilt

If quilting along with me on the class quilt, use Taj to quilt motifs in the squares highlighted in red. You can quilt the motif I showed you in the lesson, or create your own!

Suggested Products:



Designs with Lines Stencil Basic
8 Lines



Pounce Pad Stencil Chalk - Blue



To Purchase visit: AWRulers.com