



Machine Quilting the *Cathedral Quilt*

The Cathedral quilt pattern, designed by Alison Glass, is easy to make and so much fun to quilt!



QuiltingIsMyTherapy.com

Midnight
QUILTER

Fabric Placement



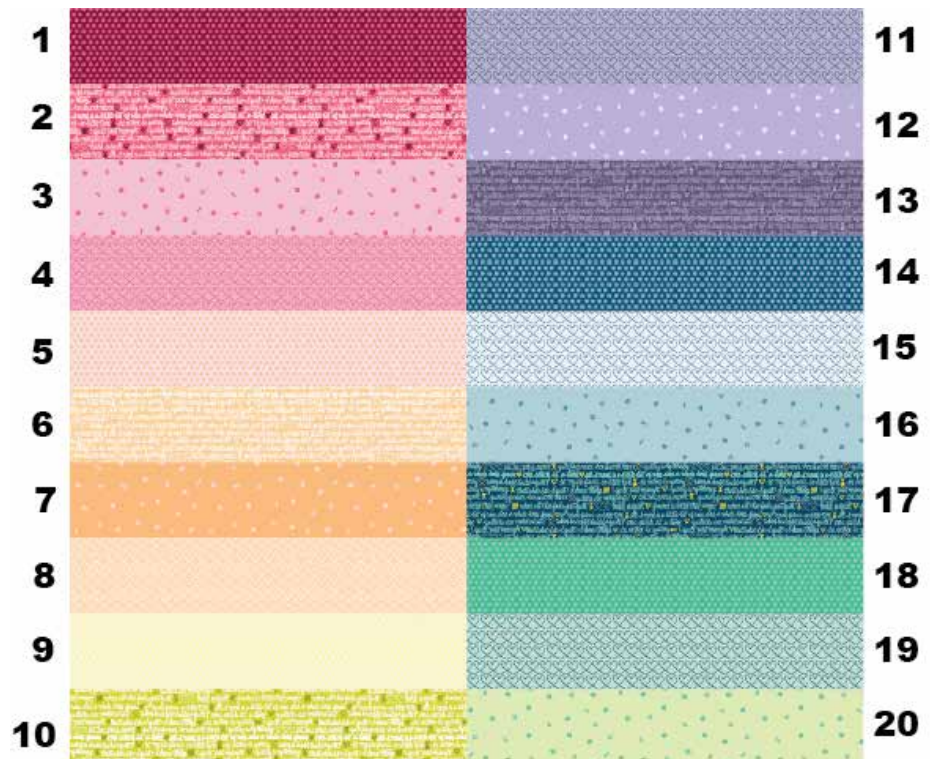
The arrangement of fabric colors is the perfect opportunity to create your own version of this quilt!

You can place your fabrics in color order or mix them up. Make the outer teardrops match the blades or not.....it's completely up to you.

Using the Inked Rainbow panel I designed exclusively for this challenge, here's the fabric placement I decided to use.

If you'd like yours to be the same, match the numbers in the diagram below to the arrangement on the picture to the left.

The panel features a 4" x 21" strip of each of the prints in the Inked Rainbow fabric collection.





Choosing Thread Colors

The rainbow fabrics of this Cathedral quilt are just begging for an array of thread colors! For this quilt, I used Glide thread, a 40wt polyester thread with just a bit of sheen. It's perfect for machine quilting, it's strong (which means less shredding and breakage) but thin enough to blend into the quilt. Plus the shine adds a touch of depth to the quilting.

All the Colors

If you love playing with threads as much as I do, the thought of using 20 different threads might not seem too crazy. It's the perfect way to use a variety of colors and really helps complete the rainbow effect of the quilt. The thread colors I used were:



Hokies, Peppermint, Cotton Candy, Pink Lemonade, Peach, Cantaloupe, Marigold, Strawberry Blonde, Lemon Ice, Limerick, Pistachio, Pale Mist, Mint, Persian, Lt. Turquoise, Baby Blue, Zaffre, Tabiz Orchid, and Teaberry.

Not all the thread colors match the fabric perfectly and that's ok! The thinness of the thread allows it to take on the hue of the fabric, helping it blend in with the quilt.

For the rest of the quilt, I used Mercury glide thread. It's a light gray that blends in perfectly with the background fabric, but its sheen allows the quilting designs to show up just a bit.

Narrowing the Colors

If the thought of so many thread color changes makes you queasy, don't worry! The great thing about 40wt thread is that one thread can blend in with a range of fabric colors. If you don't mind a few thread changes, these are the colors I suggest:

Pink Lemonade, Strawberry Blonde, Lemon Ice, Pale Mist, Baby Blue, Tabiz Orchid and Mercury (for the background)

Narrowing down the selection of threads was easy. For each of the color groups, I opted for a light to medium thread color. When faced with using a thread that isn't the same exact color as the fabric, I always lean towards the lighter color. It's completely a personal preference, but I think that lighter thread on a darker fabric is looks better than using a darker thread on a lighter fabric.



Mercury Glide thread

Bobbin Thread Color

One question I'm commonly asked is whether or not I use the same colors in the bobbin and the top. The truth is, it depends. Matching the thread colors will prevent "pokies" on your quilt (where a thread pokes through to the other side.) However, for this quilt, I used gray prewound bobbins. Using them helped save a little time (since I didn't have to wind bobbins) and the neutral color helped hide any pokies. However, the choice is yours. Matching the bobbin thread color to the top would create an amazing rainbow effect on the back of your quilt.

