
Floral FRAMES

Free-motion Challenge Quilting Along



Week 5 Quilting Diagrams & Tip Sheet
For more information about the challenge, visit FMQchallenge.com

Floral FRAMES

Free-motion Challenge Quilting Along

Week 5: Quilting Large Prints

In this week's challenge, we are leaving the borders behind and focusing on the center of our Floral Frames panel. Quilting fabric that has a large focal print can be so much fun! We can either use the quilting to highlight the designs in the fabric print or we can use the fabric for design inspiration. In this video, we will learn a couple different flower designs, plus I'll also show you how to use the quilting in the background areas to make the main elements "pop".



Scan the QR code to rewatch the Week 5 video tutorial.



Your Challenge

If you are quilting along with me on the custom panel designed for this challenge, quilt the flowers around the center as well as the areas highlighted in red. If you purchased the coordinating thread collection, use the Cobalt Blue, Linen and Pale Mist threads in this area.



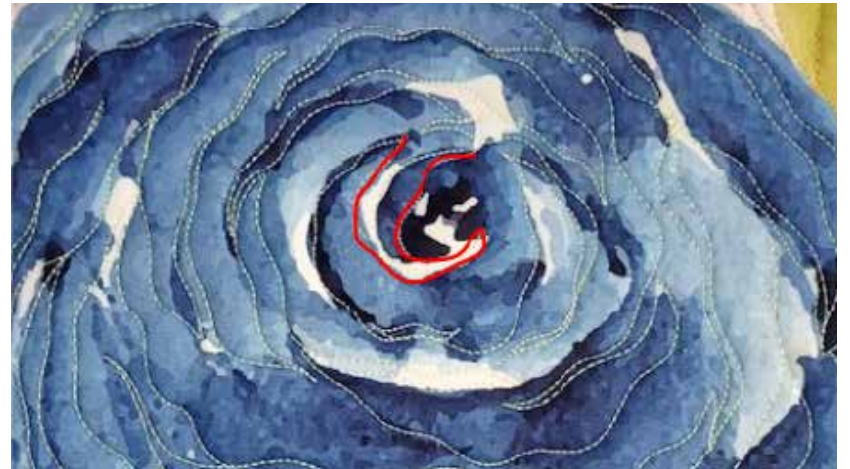


Adding Detail with the Quilting

I love quilting fabric with large, decorative prints. I figure that the fabric designer has done all the difficult work, I can simply quilt along the lines of their designs to add detail with the quilting. With the Floral Frames panel, the large watercolor flowers are just begging to be quilted along the lines to create a textured looking flower.

Basically, for this technique, we are going to start in the center of the flower and quilt along the “lines” of the flower. But don’t let the thought of this stress you out, we don’t have to hit the lines perfectly or even quilt on all of them. The trick to enjoying this process is to not overthink it. The quilting design doesn’t have to stand on it’s own, so it doesn’t have to be realistic.

As you quilt, remember that you can add as much or as little detail as you prefer. It really depends on how dense you want the quilting to be. You can also quilt details that aren’t in the fabric, for instance, I could add more “petals” to the fabric design. This is especially helpful if you want to keep consistent texture or as a way to move around the area.







Using the Fabric for Inspiration

If the idea of quilting along the lines of the fabric seems a little stressful, we can use the fabric as a guide for picking out the designs. For instance, on the Floral Frames panel that I designed just for this video series, the large watercolor flowers make it easy to select a design.....a nice big flower quilted right on top. Even though the quilted lines won't match up to the fabric, we are still going to get a nice texture that complements the fabric.

