

---

# Floral FRAMES

Free-motion Challenge Quilting Along

---



***Week 1 Quilting Diagrams & Tip Sheet***  
*For more information about the challenge, visit [FMQchallenge.com](http://FMQchallenge.com)*

# Floral FRAMES

Free-motion Challenge Quilting Along

## Week 1 : Border Motifs

Welcome to the first week of the Floral Frames Free-motion Challenge Quilting Along! In the first video of this series, we are going to see how using motifs, or stand alone designs, in our borders might be an easier option for adding detail and interest to those areas of our quilts.

Simply quilt motif designs in strategic places in the borders, then fill in the rest of the space with a filler design of your choice. It's an easy option that can give the borders of your quilts an extra "wow" factor!



Scan the QR code to rewatch the Week 1 video tutorial.



### Your Challenge

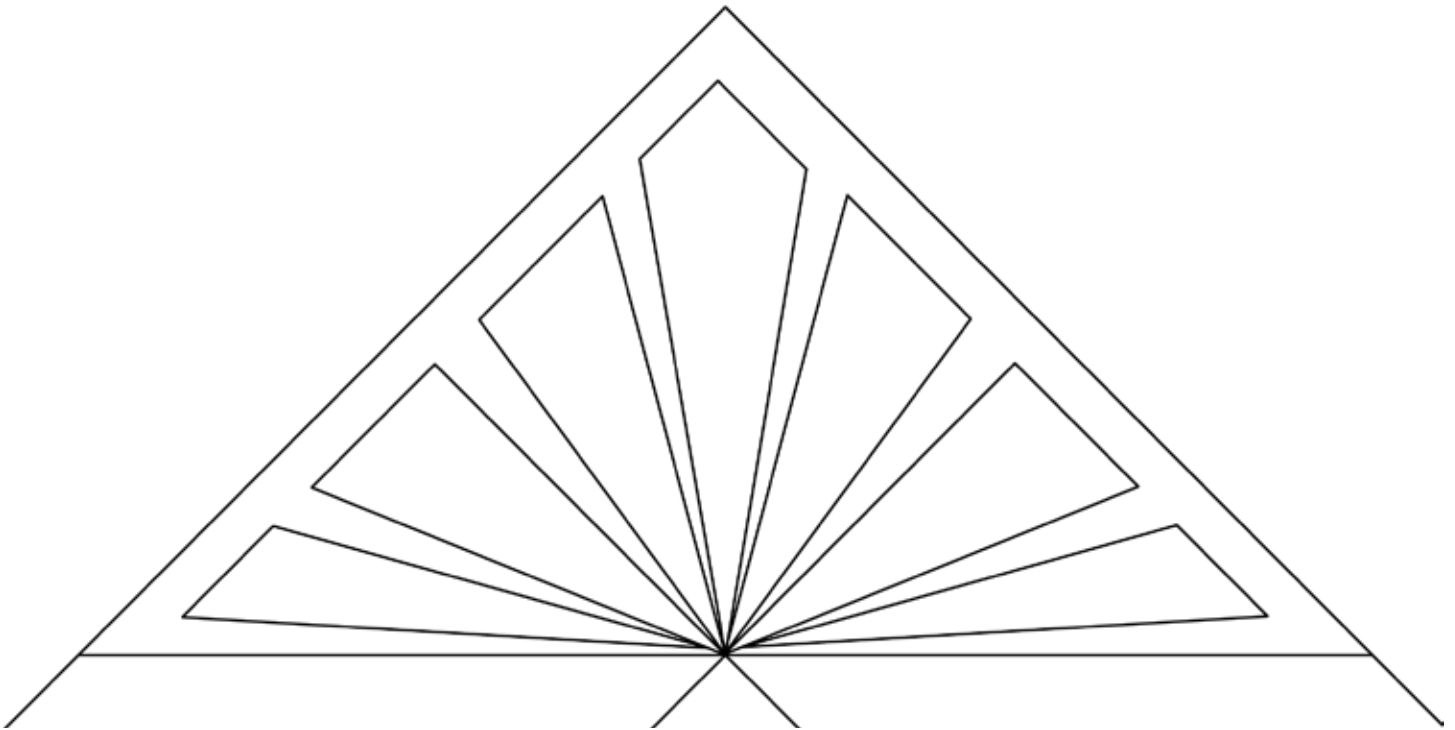
If you are quilting along with me on the custom panel designed for this challenge, quilt the outer border with the motifs of your choice. You can try out the motifs we learned in the video tutorial, or come up with your own variations. If you purchased the coordinating thread collection, use the Cobalt Blue or Cleopatra Gold thread in this area.





# Motifs

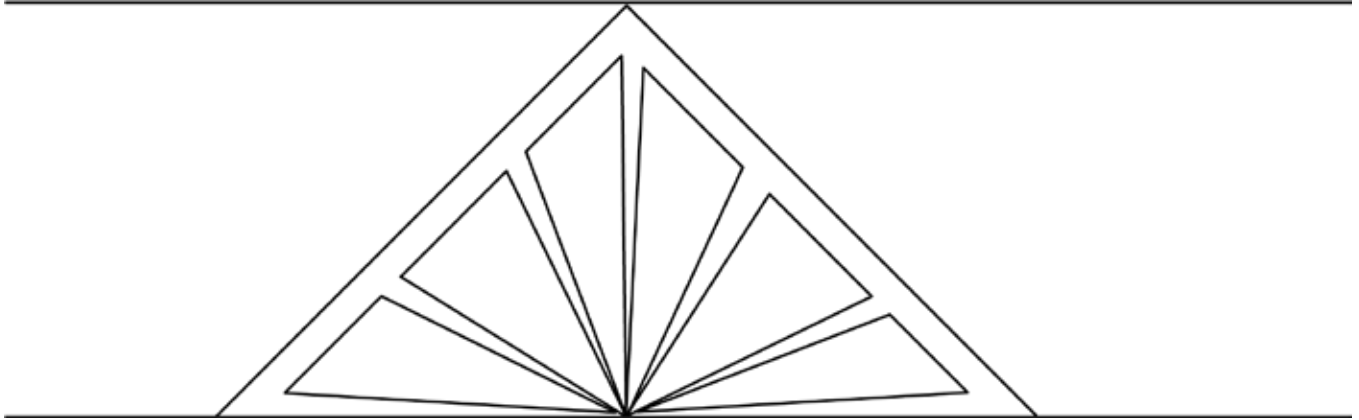
The word “motif” might sound fancy and difficult, but in reality quilting motifs aren’t hard at all! A motif is simply a decorative design or pattern. In machine quilting, I tend to think of a motif as a standalone design that isn’t continuous. These designs are meant to draw attention and can make areas of your quilt look amazing. Plus, there are so many different ways to use them on your quilts.





## Dot to Dot Side Border Motif

Quilting the Dot to Dot motif on the straight portion of the borders is very similar to quilting them in the border corners. Try this design in borders of all sizes, just adjust the number of wedges accordingly.



## Feather Motif

Instead of a geometric dot to dot design, try quilting a mini-feather motif. This adorable little feather motif is the perfect way to add an elegant, feathery look to thinner borders without committing to quilting a feather all the way around the quilt.

