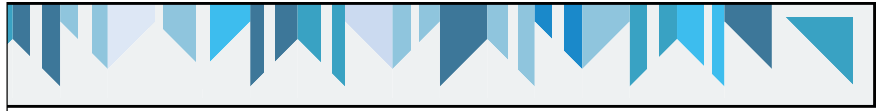


ECHOES & curves



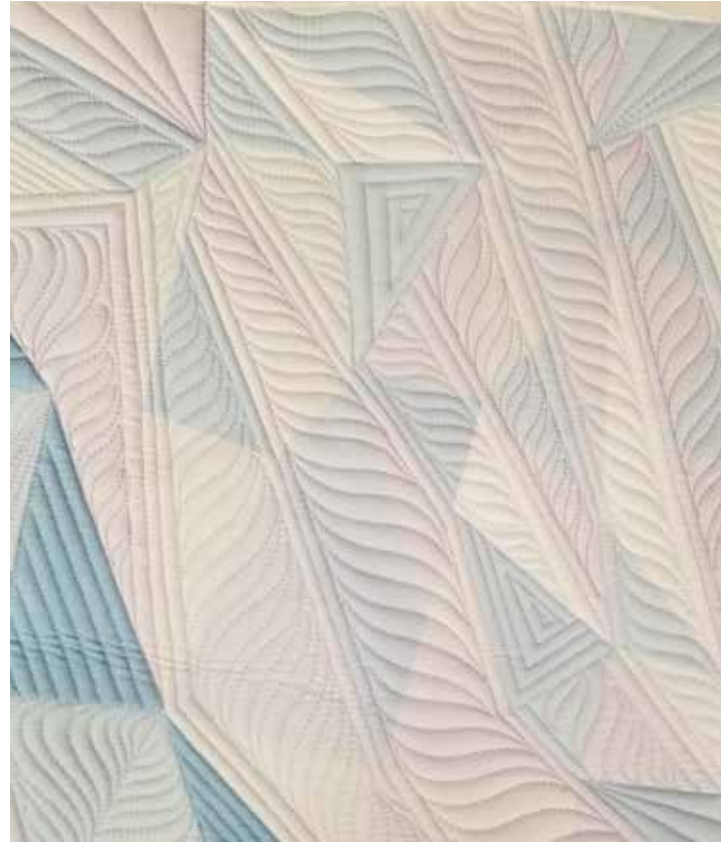
Week 6 Tip Sheet

Get ready to echo, echo, echo with this week's challenge! We are going to be combining straight lines with curves to create a design that will help highlight the secondary patterns in your quilt.

Quilting Tips for this Week's Design

This week's design will have you using the quilting to create sections. Adding echo lines will help highlight the shape, and filling in the area with curvy serpentine lines will help give it a gorgeous texture!

- Start by selecting an area that you want to use to create your section.
- Stitch along the seams to define that area and to also give you a boundary to fill in.
- Echo inside the area to help it separate it from other sections. You can also use the echoing to make larger sections smaller and more manageable.
- If you are new to ruler quilting or are nervous about the design, start with some smaller sections first.



Your Challenge:

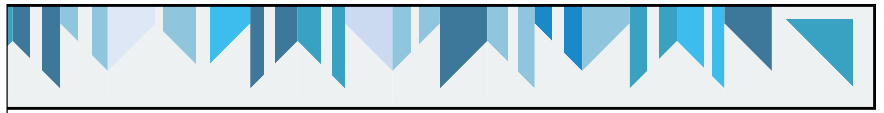
If you're quilting along with me on the custom Echoes and Curves panel, fill in the remaining areas with echoes and serpentine lines. Or, if you prefer, you can use the all-over serpentine lines design we learned last week!



For more information about the challenge, visit FMQchallenge.com



ECHOES & curves



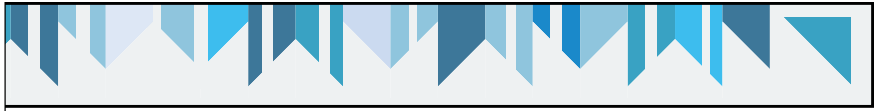
Design Inspiration

While you can create your own sections, here are some pictures that will show you how I quilted my panel. You can use them for inspiration, or make your own designs.





ECHOES & *curves*



If you can't decide which designs to use in each particular area, use this diagram to audition the design placement on your panel.

